



2021 HUMMINBIRD® PRODUCTS



**HUMMINBIRD**®

**HUMMINBIRD
TECHNICAL SUPPORT**

678 Humminbird Lane
Eufraula, AL 36027
Toll Free: (800) 533-1468
Fax: (855) 342-2563

**DEALER AND
DISTRIBUTOR SERVICE**

555 Main Street, Suite 241
Racine, WI 53403
Toll Free: (800) 493-6686
Fax: (800) 451-0387
Fax: (262) 631-6609




**JOHNSON OUTDOORS INC.
CANADA**

4180 Harvester Road
Burlington, Ontario L7L 6B6
Phone: (905) 634-0023
Fax: (905) 634-0261

360 Imaging, Autodesk, Garmin, Chartplotter, Coastlander, Cross Tech, Down Imaging, Forre, HeliX, Humminbird, LakeMaster, Maxum, MICA 500 Imaging, MICA Down Imaging, MICA Imaging, MICA Side Imaging, MIRA, Side Imaging, SIM, Terra and Ultra are registered trademarks of Johnson Outdoors Marine Electronics, Inc.
APEX, AutoPilot, Dualbeam PLUS, Fishcount, i-Fish, Link, MEGA Down Imaging®, MEGA Imaging®, MEGA Live Imaging, MEGA Side Imaging®, One-Boat Network, Penetration, SmartStim, Sport-Lock and T-Pro are trademarks of Johnson Outdoors Marine Electronics, Inc.
Apple is a trademark of Apple Inc., registered in the U.S. and other countries. App Store is a service mark of Apple Inc., registered in the U.S. and other countries. Google Play and the Google Play logo are trademarks of Google Inc. Android is a trademark of Google Inc. iTools is a trademark of Navionics, Inc. and Navionics SPK, Navionics is a registered trademark of Navionics, Inc. MICA 2000 is a registered trademark of MICA. iBait is a registered trademark of National Products, Inc. The Bluecoat® word mark and logo are registered trademarks owned by Bluecoat®. SIM, Inc.
Specifications are subject to change without notice.

©2021 Johnson Outdoors Marine Electronics, Inc. All Rights Reserved.



Johnson Outdoors Marine Electronics, Inc. | 678 Humminbird Lane | Eufraula, AL 36027
HUMMINBIRD.COM   

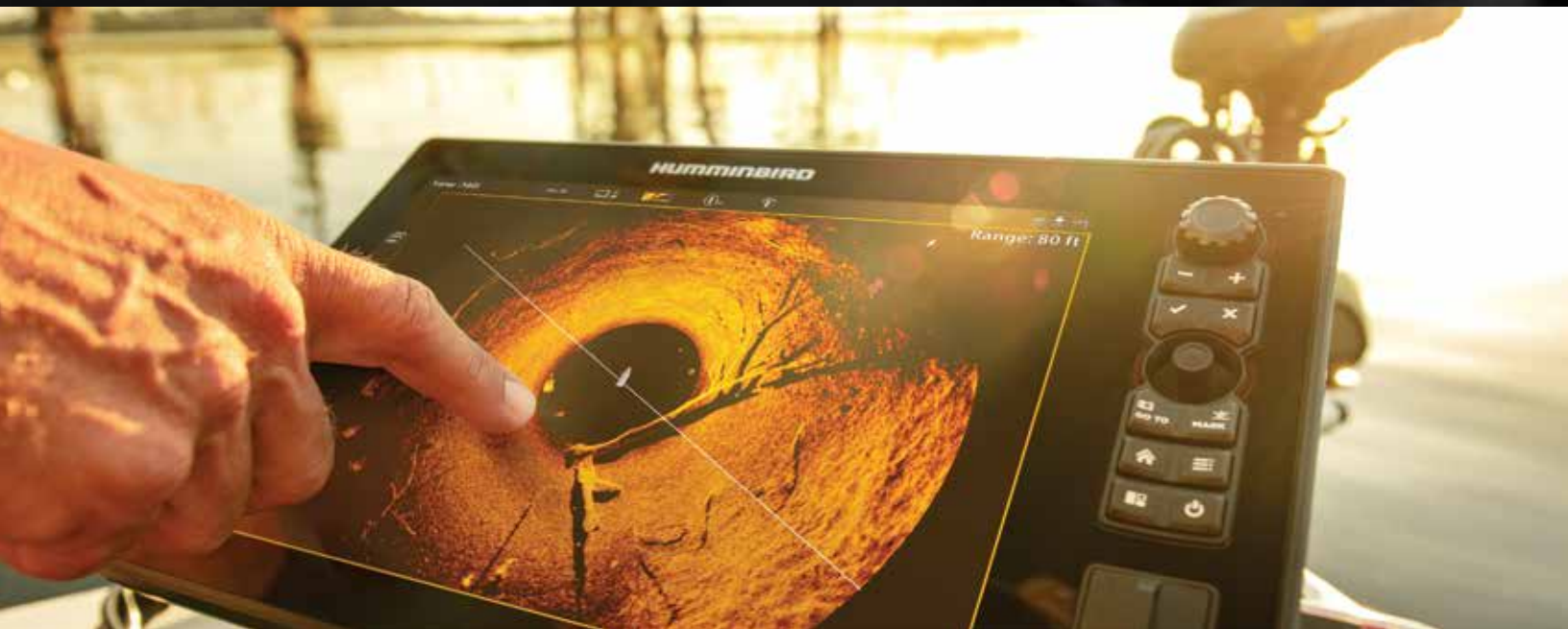


CONTENTS

- 4 | One-Boat Network
- 6 | Fish Finder Guide
- 8 | Sonar
- 18 | APEX Series
- 22 | SOLIX Series
- 26 | HELIX Series
- 31 | PiranhaMAX
- 32 | Product Specifications
- 40 | Accessories

IT'S SHOW TIME.













The gear is prepped. The stage is set. It's all been building to this moment. Will you rise to the challenge? Or go home empty-handed? This much is clear: Humminbird® and new MEGA Live Imaging™ can lead the way and reveal the world below with unmatched detail now in real time. The search is over. Cut the outboard. Pick up a rod. And let the show begin.



WELCOME TO THE ONE-BOAT NETWORK

Humminbird, Minn Kota® and Cannon® share more than just a physical address. We share a passion for fishing and a mission to craft gear that lets you enjoy your time on the water even more. That's why we created the One-Boat Network™: a commitment to make the most advanced fishing gear even better, by making it work together. Our engineering teams constantly look for ways our products can seamlessly integrate and communicate, unlocking more features, capabilities and potential for anglers everywhere.



-  HUMMINBIRD MEGA LIVE AND MEGA 360 TRANSDUCERS
-  MINN KOTA TROLLING MOTOR WITH I-PILOT LINK™ GPS SYSTEMS AND BUILT-IN MEGA IMAGING®
-  HUMMINBIRD CONTROL HEADS – BOW
-  MINN KOTA TROLLING MOTOR FOOT PEDAL
-  MINN KOTA TALON FOOT SWITCH
-  HUMMINBIRD CONTROL HEADS – CONSOLE
-  HUMMINBIRD LAKEMASTER® CHARTS
-  MINN KOTA SHALLOW WATER ANCHORS
-  MINN KOTA REMOTES FOR TROLLING MOTORS AND SHALLOW WATER ANCHORS 
-  MINN KOTA MOBILE APPS
-  HUMMINBIRD FISHSMART™ APP
-  CANNON OPTIMUM DOWNRIGGER



AUTOMATIC NAVIGATION

Focus on fishing, and let your Humminbird do the rest. From your fish finder, select a depth contour (or the shoreline) and activate Follow. Your motor will kick in, find the contour and automatically run your boat along it.



TROLLING MOTOR CONTROL

Mind over motor. Direct from your Humminbird unit, take command of your trolling motor to easily steer, engage Spot-Lock™ and, with an Ulterra® motor, stow or deploy.



INSTANT ANCHORING

Hold it right there. Bluetooth®-capable Humminbird models can communicate wirelessly with Minn Kota Talon and Raptor shallow water anchors to deploy, retract and adjust anchor settings.



PRECISION FISHING

Stay on target. Control up to four Cannon Optimum™ downriggers right from your Humminbird. Display and control downrigger operations and settings either together or individually.



ON-THE-GO ACCESS

Take Humminbird with you. The FishSmart app lets you push wireless transfer software updates to your Humminbird fish finder, view and manage your network and connect with technical support.

FISH FINDER SELECTION GUIDE

If you're looking to find fish and make the most of your time on the water, this is your guide. From seeing your prey to tracking your GPS location to understanding your surroundings, Humminbird can help you do it all. Use the chart below to discover the model that's right for you.

	Model	DISPLAY	PART NUMBER	BUILT-IN FEATURES							BUILT-IN SONAR						OPTIONAL ADD-ONS																							
				TOUCH SCREEN	FULL HD (1920 X 1080)	WI-FI	BLUETOOTH®	ETHERNET NETWORKING	DUAL PORT ETHERNET	DUAL CHANNEL CHIRP SONAR	NMEA 2000®	HDMI IN/OUT	GPS RECEIVER	BASEMAP	AUTOCHART LIVE	IMAGING			2 D			MEGA Live Imaging	MEGA 360 Imaging®	i-Pilot Link	CHIRP Radar	NMEA 2000	External GPS Receiver	AIS Compatible	5-Port Ethernet Switch	GPS with Heading Sensor	Humminbird Map Cards	Navionics Map Cards								
																			(Best)	(Better)	(Good)	(Best)	(Better)	(Good)																
APEX <small>NETWORKING</small> 	SI + DI + 2D	APEX 19 • MSI+ Chartplotter APEX 19 • MSI+ Chartplotter (CHO) APEX 16 • MSI+ Chartplotter APEX 16 • MSI+ Chartplotter (CHO) APEX 13 • MSI+ Chartplotter APEX 13 • MSI+ Chartplotter (CHO)	18.5" 18.5" 15.6" 15.6" 13.3" 13.3"	411240-1 411240-1CHO 411500-1 411500-1CHO 411470-1 411470-1CHO																																				
	SOLIX <small>NETWORKING</small> 	SI + DI + 2D	SOLIX 15 • MEGA SI+ GPS G3 SOLIX 15 • MEGA SI+ GPS G3 (CHO) SOLIX 12 • MEGA SI+ GPS G3 SOLIX 12 • MEGA SI+ GPS G3 (CHO) SOLIX 10 • MEGA SI+ GPS G3 SOLIX 10 • MEGA SI+ GPS G3 (CHO)	15.4" 15.4" 12.1" 12.1" 10.1" 10.1"	411570-1 411570-1CHO 411550-1 411550-1CHO 411530-1 411530-1CHO																																			
		HELIX <small>NETWORKING</small> 	SI + DI + 2D	HELIX 15 • MEGA SI+ GPS G4N HELIX 15 • MEGA SI+ GPS G4N (CHO) HELIX 12 • MEGA SI+ GPS G4N HELIX 12 • MEGA SI+ GPS G4N (CHO) HELIX 10 • MEGA SI+ GPS G4N HELIX 10 • MEGA SI+ GPS G4N (CHO) HELIX 9 • MEGA SI+ GPS G4N HELIX 9 • MEGA SI+ GPS G4N (CHO)	15.1" 15.1" 12.1" 12.1" 10.1" 10.1" 9" 9"	411320-1 411320-1CHO 411450-1 411450-1CHO 411420-1 411420-1CHO 411380-1 411380-1CHO																																		
			DI + 2D	HELIX 15 • MEGA DI+ GPS G4N (CHO) HELIX 12 • MEGA DI+ GPS G4N HELIX 12 • MEGA DI+ GPS G4N (CHO) HELIX 10 • MEGA DI+ GPS G4N HELIX 10 • MEGA DI+ GPS G4N (CHO) HELIX 9 • MEGA DI+ GPS G4N HELIX 9 • MEGA DI+ GPS G4N (CHO)	15.1" 12.1" 12.1" 10.1" 10.1" 9" 9"	411310-1 411440-1 411440-1CHO 411410-1 411410-1CHO 411370-1 411370-1CHO																																		
			2D	HELIX 12 • CHIRP GPS G4N HELIX 10 • CHIRP GPS G4N HELIX 9 • CHIRP GPS G4N HELIX 8 • CHIRP GPS G4N	12.1" 10.1" 9" 8"	411430-1 411400-1 411360-1 411330-1																																		
			HELIX 7 • CHIRP GPS G3N ICE HELIX 7 • CHIRP GPS G3N (AS)	7" 7"	411060-1 411210-1																																			
HELIX & PIRANHAMAX <small>NON-NETWORKING</small>	SI + DI + 2D		HELIX 7 • MEGA SI GPS G3 HELIX 5 • SI GPS G2	7" 5"	410950-1 410230-1																																			
	DI + 2D		HELIX 7 • MEGA DI GPS G3 HELIX 5 • DI GPS G2 HELIX 5 • DI G2	7" 5" 5"	410940-1 410220-1 410200-1																																			
			PiranhaMAX 4 DI	4.3"	410160-1																																			
		2D	HELIX 7 • CHIRP GPS G3 HELIX 5 • CHIRP GPS G2 HELIX 5 • CHIRP GPS G2 (PT) ICE HELIX 5 • CHIRP GPS G2 (AS) HELIX 5 • SONAR G2 HELIX 5 • SONAR G2 (PT) PiranhaMAX 4 PiranhaMAX 4 (PT)	7" 5" 5" 5" 5" 5" 4.3" 4.3"	410930-1 410210-1 410260-1 411190-1 410190-1 410250-1 410150-1 410170-1																																			

CHO = Control Head Only (Transducer not included) | PT = Portable (Includes carry case and battery) | AS = All Season (Includes everything needed for ice and openwater fishing)

SI = Side Imaging | DI = Down Imaging | 2D = Traditional Sonar

APEX (page 18)



APEX 19



APEX 16



APEX 13

SOLIX (page 22)



SOLIX 15



SOLIX 12



SOLIX 10

HELIX (page 26)



HELIX 15



HELIX 12



HELIX 10



HELIX 9



HELIX 8



HELIX 7



HELIX 5

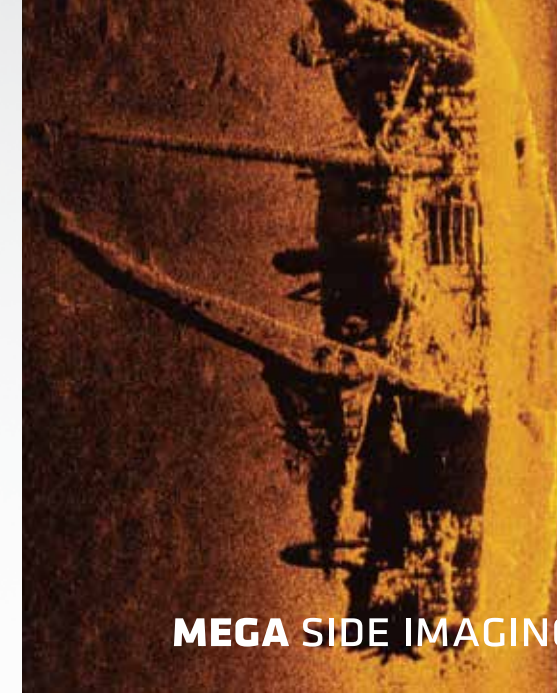
PIRANHAMAX (page 31)



PiranhaMAX 4

BRING FISH INTO FOCUS.

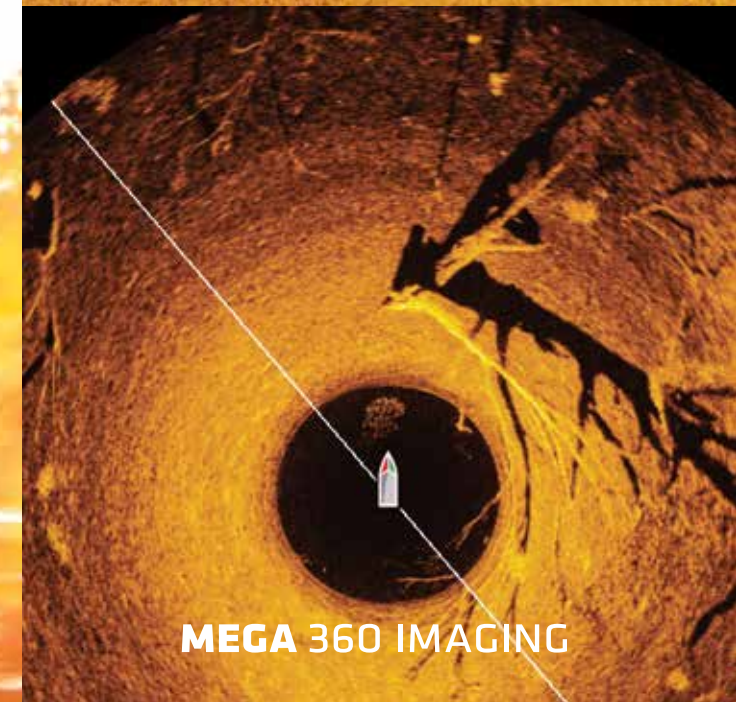
How well do you know the waters you fish? Not as well as you might think. From coast to coast and everywhere in between, more anglers are finding structure and fish they didn't know were there, thanks to the clarity of MEGA Imaging, pioneered by Humminbird and built into APEX™, SOLIX® and select HELIX® Series models. Using this high-frequency sonar, you can easily distinguish fish from structure, see the direction fish are facing and even target individual species. Choose MEGA Side Imaging for an incredible view to the left and right of your boat. Opt for MEGA Down Imaging for a crystal-clear picture below your boat. Put yourself at the center of the underwater scene with MEGA 360 Imaging, revealing every detail in every direction. Or, for must-watch detail and non-stop action, switch on new MEGA Live Imaging and see a real-time view of what's below and around your boat. With MEGA Imaging, the options are endless, and if you're crafty enough, your winning streak can be, too.



MEGA SIDE IMAGING



MEGA DOWN IMAGING



MEGA 360 IMAGING

NEW

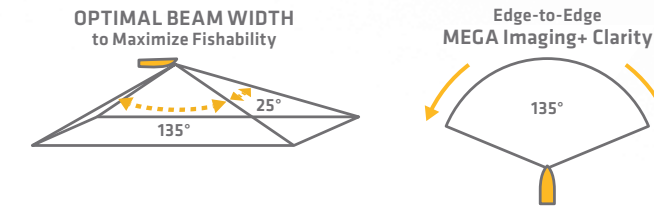
HUMMINBIRD

MEGA **LIVE** IMAGING



REALITY TV.

Get must-watch detail and non-stop action with new MEGA Live Imaging. Edge-to-edge clarity shows you exactly what's below the surface in real time, with no gaps in coverage or losses in detail. Want to know if a certain area is worth fishing? You can be absolutely certain with crystal-clear, live sonar returns of fish, structure and your lure, in Down, Forward or Landscape Mode. There's no image like it. For real.



THREE MODES TO ATTACK THE WATER



DOWN

Watch it all go down. This transducer angle is ideal for seeing detailed images of structure and fish swimming underneath your boat, allowing you to easily drop them a line.



FORWARD

Now here's something to look forward to. Great for looking and casting out ahead and around the boat, making casts and lure presentation more precise.



LANDSCAPE

Keep a sharp lookout. Perfect for gathering intel in shallow water, this transducer angle makes full use of your widescreen display to show you what's ahead of your boat in clear detail.



COMPATIBLE MODELS
APEX (all models)
SOLIX (all models)
HELIX 8-15 G3N/G4N models with MEGA Imaging

HUMMINBIRD

MEGA 360 IMAGING

ENTER THE CIRCLE OF TRUST.

Surround yourself with more detail than ever before. MEGA 360 Imaging sweeps up to 125 feet in every direction around your boat to deliver the clearest images you've ever seen of structure, the bottom and fish, even while you're sitting still. That means more accurate casts, more unforgettable moments and more incredible MEGA Imaging—all around.

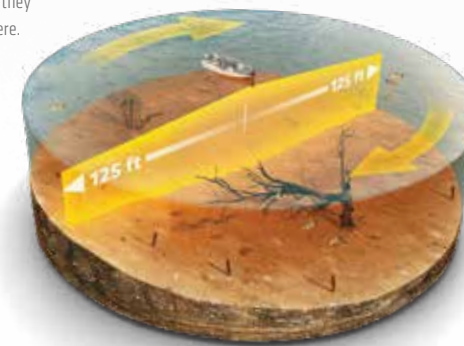


COMPATIBLE MODELS
APEX (all models)
SOLIX (all models)
HELIX 8-15 G3N/G4N models with MEGA Imaging+



EVERY DETAIL IN EVERY DIRECTION

With MEGA 360 Imaging, we didn't reinvent the wheel. We redefined it, bringing the unmatched coverage of our 360 Imaging® technology into the megahertz range for next-level detail. Like underwater radar, the MEGA 360 Imaging beam rotates giving you a 360-degree view of the water that's constantly updating—with your boat at the center. Fish won't ever see you coming—allowing you to cast and hook fish before they even know you're there.



DIAL IN YOUR SWEEP AREA

Nothing beats the coverage and detail of MEGA 360 Imaging. You can customize your sweep area from 360 degrees down to 10 degrees. Use preset view options, like 45 degrees in front of your boat, to find and cast to productive spots without spooking fish.



TROLL SMARTER

Hope you've got plenty of space on the wall because now that you can mount the MEGA 360 Imaging transducer nearly anywhere on your boat, the trophies are sure to follow. MEGA 360 mounts directly to a Minn Kota Ultrex™, Fortrex® or Maxxum® trolling motor so you can steer without affecting your sonar return. For even more flexibility, new MEGA 360 Imaging - Universal and No Mount transducer options give you uninterrupted, 360-degree, detail-rich views, even while fishing in wind, waves or using Spot-Lock™.

NEW MEGA 360 - UNIVERSAL
#411390-1

NEW MEGA 360 - NO MOUNT
#411580-1

MEGA 360 IMAGING - ULTREX
MINN KOTA ULTREX TROLLING MOTORS
#411250-1

MEGA 360 IMAGING - FORTREX
MINN KOTA FORTREX OR MAXXUM TROLLING MOTORS
#411260-1



> See 360 Imaging products and accessories on page 48

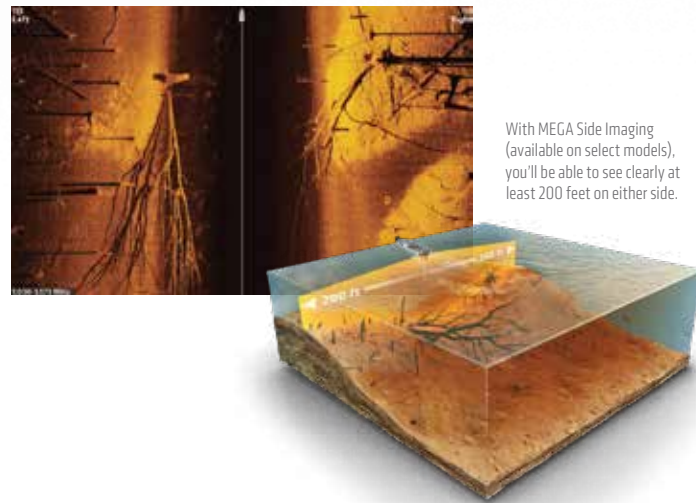
HUMMINBIRD

MEGA IMAGING

INTERPRETING YOUR RETURNS.

MEGA SIDE IMAGING

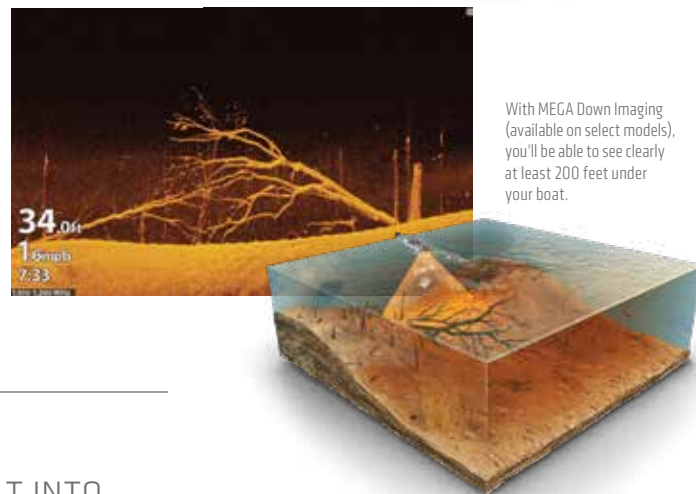
Humminbird Side Imaging uses an ultra-thin beam to take a "sonar snapshot" of the area to the left and right of your location. The return image for this slice is then added to the images taken immediately before and after to build an incredibly detailed view of the bottom. To help visualize how Side Imaging works, fold the screenshots on page 15 as indicated. The dark, center portion of the screen represents the column of water below your boat. The lighter portions on the far left and right of the screen show you the bottom below and to the left and right of your boat. Keep in mind, Side Imaging is a record of the water and terrain your boat has already passed over. Structure will appear as a clearly defined bright shape with an adjacent dark sonar "shadow." Generally, long shadows indicate the object is tall and small shadows indicate something short.



With MEGA Side Imaging (available on select models), you'll be able to see clearly at least 200 feet on either side.

MEGA DOWN IMAGING

Like MEGA Side Imaging, Humminbird Down Imaging uses a razor-thin, high-frequency beam to create picture-like images of structure, vegetation and fish. But unlike MEGA Side Imaging, Down Imaging returns are oriented identically to traditional, down-looking sonar returns—with the most-recent information appearing on the right side of the screen.



With MEGA Down Imaging (available on select models), you'll be able to see clearly at least 200 feet under your boat.

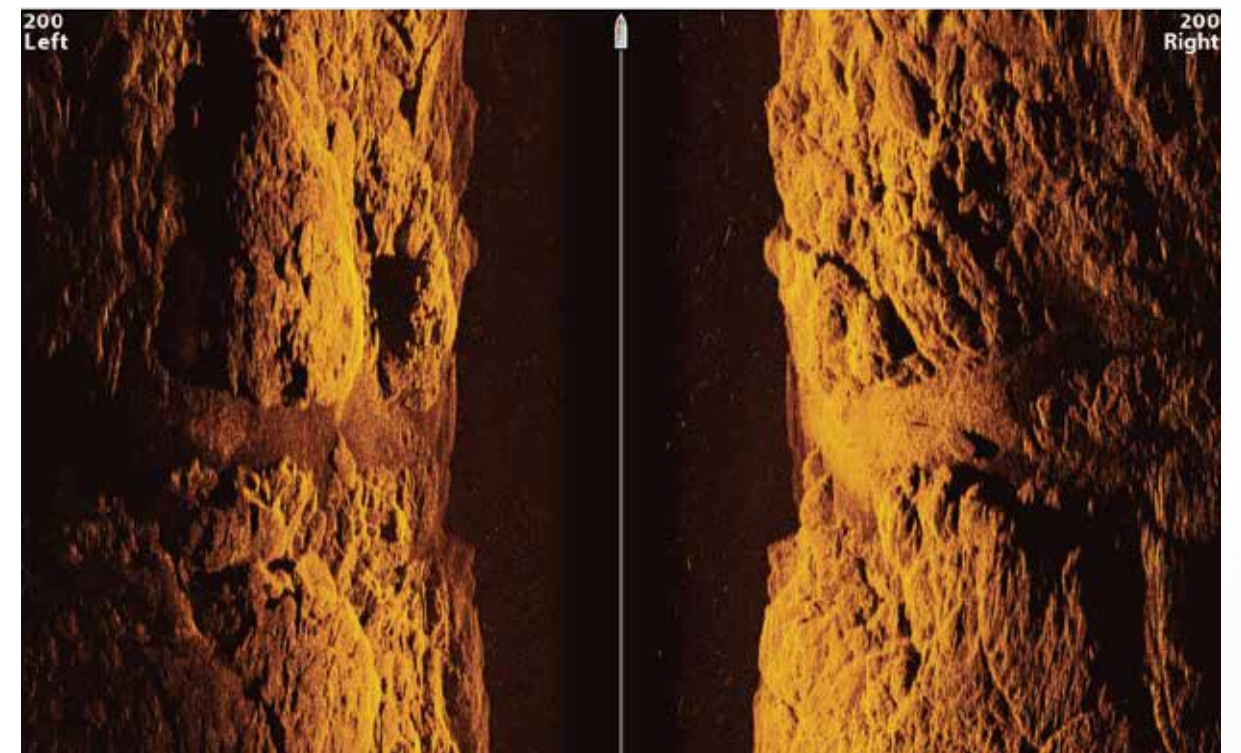
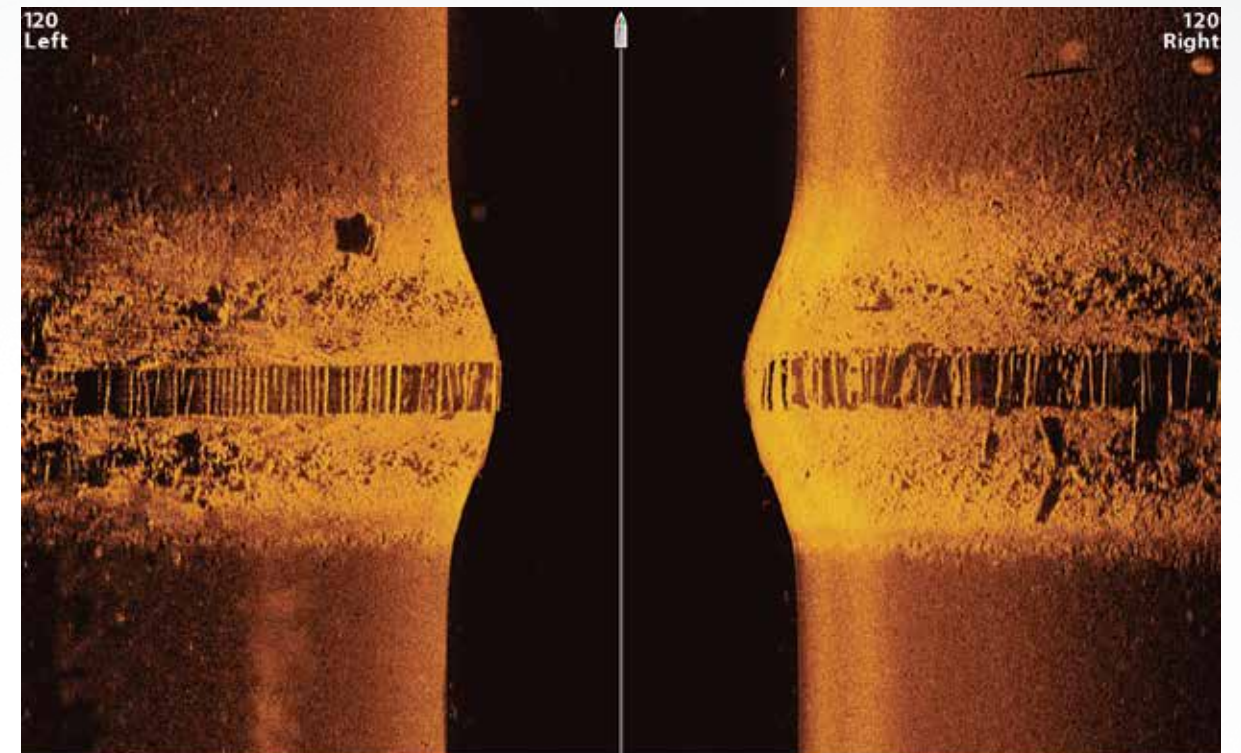


MEGA IMAGING BUILT INTO MINN KOTA TROLLING MOTORS

See what your trolling motor sees. Humminbird MEGA Side Imaging and MEGA Down Imaging transducers are now built into the lower unit of Minn Kota Ulterra® and Ultrex motors, while built-in MEGA Down Imaging is available on Terrova® and Fortrex® models. Just connect one of these motors to a compatible APEX, SOLIX or HELIX, including one of our Control Head Only units, for the clearest, most detailed images ever, with no messy wires. Learn more at MinnKotaMotors.com.



FOLD AS SHOWN TO HELP VISUALIZE HOW SIDE IMAGING WORKS

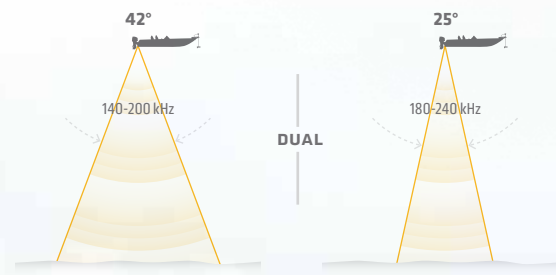


HUMMINBIRD

DUAL SPECTRUM CHIRP

BEGIN YOUR SEARCH WITH BETTER HARDWARE.

Don't let the pretty pictures fool you. Our proprietary, Low Q CHIRP transducer is the real hero. Using more coverage to detect fish, structure and the bottom, this workhorse makes possible the highly defined fish arches and clear target separation of Dual Spectrum CHIRP Sonar. Ounce for ounce, pulse for pulse, it's the best sonar in its class. No contest. Available on APEX, SOLIX and select HELIX models.



WIDE MODE Maximum Coverage

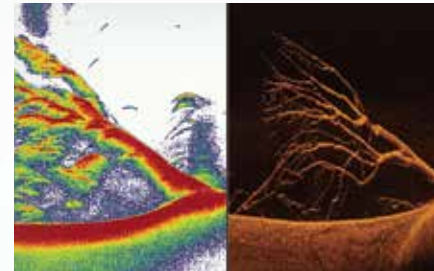
Search far and wide. Opt for Wide Mode when vertical jigging, in shallow water or when you just want to see a wider view of the world below.

NARROW MODE Maximum Detail

Hone in on the small stuff that makes a big difference. Narrow Mode lets you target individual fish, or separate fish from structure and the bottom with laser precision.

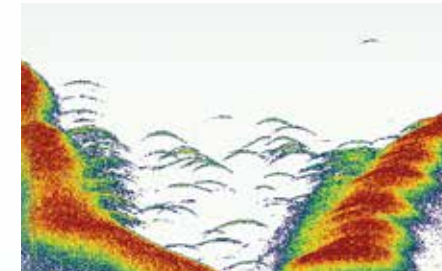
STRONG RETURNS WITHOUT NOISE

Stop seeing things that aren't there. A high signal-to-noise ratio translates to better defined targets, less clutter and greater certainty that what you're looking at on-screen is legit.



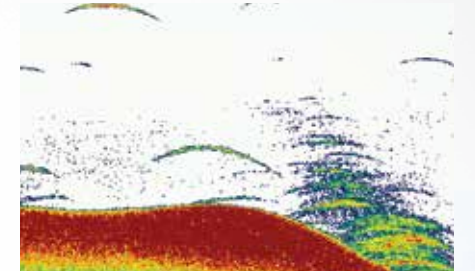
SUPERIOR TARGET SEPARATION

Separating fish from their habitat is the name of the game. And now, you'll be able to more easily tell the difference between bait and game fish, and nearby structure and vegetation.



CLEARLY DEFINED FISH ARCHES

We've got bad news for your arch nemesis. Large game fish will show up on your screen as long, well-defined arches, for quick identification and accurate lure presentation.



AIRMAR CHIRP TRANSDUCERS

For deepwater applications, easily connect an Airmar transducer to your APEX or SOLIX head unit. The Airmar® transducer ID feature instantly recognizes which transducer you've installed and auto-configures your CHIRP frequency settings to optimize performance. Select HELIX models are also compatible with Airmar transducers. For more information, talk to your dealer or visit AirmarTechnology.com.



NEW APEX SERIES

CLARITY HAS REACHED A NEW PEAK.

Welcome to the top. The new APEX Series delivers the clearest view of sonar and charts to hit water. Know exactly what's under and around your boat, viewing fish, structure, surroundings and points of interest on the crystal-clear full-HD screen. Add the power of advanced networking features like NMEA 2000, Dual Ethernet ports and the One-Boat Network to unlock even more fish-finding and boat-control capabilities. Built specifically for serious anglers, the APEX Series can help take your fishing success to the next level.



LOOK SHARP

The slim-fit, full-HD Cross Touch® display of the APEX Series offers a crystal-clear view of what's below. And with multiple in-dash mounting options, its sleek design will look just as sharp on your helm. From sonar to navigation to vessel information, the full-HD screen brings every detail to life with eye-popping clarity, so you can find and catch more fish.



SEAMLESS FISHING

Rig your boat to give yourself the ultimate advantage on the water. The APEX Series provides advanced networking options you would expect, plus premium options like dual channel CHIRP sonar, dual Ethernet ports, HDMI video input/outputs and CZONE digital switching support. With the option to customize screen combinations and data readouts, you can take full advantage of your fully connected fishing machine.



APEX SERIES

FULL-HD DISPLAY
1920x1080

CROSS TOUCH
INTERFACE

DUAL CORE
PROCESSOR

CONNECTIVITY

Ethernet (Dual Ports)
Bluetooth
Wi-Fi
NMEA 2000
HDMI Video In/Out
CZONE Digital Switching
CHIRP Radar
AIS
VHF Radio

SONAR

MEGA Imaging+
Dual Spectrum CHIRP
Dual Channel CHIRP Sonar
Airmar xID
MEGA 360 Imaging*
MEGA Live Imaging*

GPS/CHARTS

Built-In GPS
Humminbird BaseMap
AutoChart Live
LakeMaster*
CoastMaster*
Navionics*



ONE-BOAT
NETWORK™

*Compatible



APEX SERIES

NETWORKING



APEX Series is part of the One-Boat Network (See page 4).



APEX SERIES | MEGA SI+ CHARTPLOTTER

Feast your eyes. Choose the APEX Series display that best matches your requirements and console dimensions. All APEX models are compatible with the One-Boat Network and offer a full complement of Humminbird sonar and mapping technologies, starting with the incredible clarity of MEGA Side Imaging+.



APEX 19 MEGA SI+ CHARTPLOTTER
FULL HD 18.5" DISPLAY / 1920H X 1080V
#411240-1
#411240-1CHO (CONTROL HEAD ONLY)

APEX 16 MEGA SI+ CHARTPLOTTER
FULL HD 15.6" DISPLAY / 1920H X 1080V
#411500-1
#411500-1CHO (CONTROL HEAD ONLY)

APEX 13 MEGA SI+ CHARTPLOTTER
FULL HD 13.3" DISPLAY / 1920H X 1080V
#411470-1
#411470-1CHO (CONTROL HEAD ONLY)

CHO MODELS (CONTROL HEAD ONLY)

Want to add a new unit to an existing Humminbird network, or select your own transducer? A CHO model gives you the freedom to choose. View our accessory transducer options, including the MEGA Imaging stainless steel thru-hull, and find the right one for you on pages 46-47.



AIRMAR CHIRP TRANSDUCERS

The APEX Series is compatible with Airmar's CHIRP-ready transducers and includes Airmar xID for simple configuration and the best possible sonar picture. Trusted by commercial fishermen and tournament anglers everywhere, Airmar will help you find fish at depths that were previously unimaginable. Learn more at airmar.com.



- FULL HD DISPLAY
- CROSS TOUCH INTERFACE
- MEGA SIDE IMAGING+
- MEGA DOWN IMAGING+
- DUAL SPECTRUM CHIRP
- DUAL CHANNEL CHIRP SONAR
- PRECISION GPS
- HUMMINBIRD BASEMAP
- AUTOCHART LIVE
- DUAL PORT ETHERNET
- HDMI IN/OUT
- WI-FI
- NMEA 2000



ADD ONS

- MEGA LIVE IMAGING+
- MEGA 360 IMAGING+
- i-PILOT LINK
- CHIRP RADAR

Humminbird LakeMaster | Humminbird LakeMaster PLUS | Humminbird CoastMaster
Humminbird SmartStrike | Humminbird AutoChart Live Zero Line | Navionics
Navionics+ | Navionics HotMaps Platinum | Navionics Platinum+ | Minn Kota Talon
Minn Kota Raptor | AIS | AutoPilot | GPS Heading Sensor | 5-Port Ethernet
Switch | CZONE Contact 6/Contact 6 Plus 6 Digital Switching



FISHSMART APP COMPATIBLE

Update software and access technical support using the FishSmart app. See details on page 59.

NEW SOLIX SERIES



MORE IS MORE.

Some anglers expect more—from themselves, from their tackle, from their technology. If that's you, look no further. The SOLIX Series gives you everything you need to dominate the water, with an intuitive interface, all the customization options to make it your own and now ultra-responsive performance, thanks to a new dual core processor. You'll also have access to some of the biggest innovations on the water, including MEGA Imaging, Dual Spectrum CHIRP, AutoChart® Live, Wi-Fi, Bluetooth and NMEA 2000 connectivity. So stop settling for less, and get ready for more.

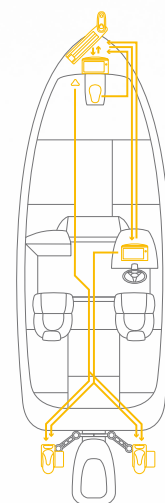
MAKE SOLIX YOUR OWN

Instantly take command of exclusive technologies like MEGA Imaging, Dual Spectrum CHIRP and AutoChart Live, and customize up to four independent viewing panes to your needs and situation. A customized sidebar provides quick access to your favorite views, navigational data, vessel information and accessories like Minn Kota Talon and i-Pilot Link. In addition, make SOLIX your own with the ability to customize your home screen wallpaper.



ADVANCED NETWORKING

Supports Ethernet and Bluetooth for connection to One-Boat Network and includes compatibility for NMEA 2000, Wi-Fi, CZONE, Airmar xID, CHIRP Radar, AIS and VHF accessories.



CROSS TOUCH

Take command of the display like never before with Cross Touch. Everything you can do with the touchscreen, you can also do with the keypad—so rough conditions will never compromise your control.

SOLIX SERIES

HD DISPLAY
1280x800

CROSS TOUCH
INTERFACE

DUAL CORE
PROCESSOR

CONNECTIVITY

- Ethernet
- Bluetooth
- Wi-Fi
- NMEA 2000
- CZONE Digital Switching
- CHIRP Radar
- AIS
- VHF Radio

SONAR

- MEGA Imaging+
- Dual Spectrum CHIRP
- Airmar xID
- MEGA 360 Imaging*
- MEGA Live Imaging*

GPS/CHARTS

- Built-In GPS
- Humminbird BaseMap
- AutoChart Live
- LakeMaster*
- CoastMaster*
- Navionics*



ONE-BOAT
NETWORK™

*Compatible





SOLIX SERIES

G3 NETWORKING



SOLIX Series G3 is part of the One-Boat Network (See page 4).



SOLIX SERIES G3 | MEGA SI+ · MEGA DI+ · CHIRP · GPS

Size matters. Select the SOLIX Series display that best meets your fishing needs and boat. All SOLIX models are compatible with the One-Boat Network and offer a complete arsenal of Humminbird sonar and mapping technologies, starting with the incredible clarity of MEGA Side Imaging+.



SOLIX 15 MEGA SI+ GPS G3
 HD 15.4" DISPLAY / 1280H X 800V
 #411570-1
 #411570-1CHO (CONTROL HEAD ONLY)

SOLIX 12 MEGA SI+ GPS G3
 HD 12.1" DISPLAY / 1280H X 800V
 #411550-1
 #411550-1CHO (CONTROL HEAD ONLY)

SOLIX 10 MEGA SI+ GPS G3
 HD 10.1" DISPLAY / 1280H X 800V
 #411530-1
 #411530-1CHO (CONTROL HEAD ONLY)

CHO MODELS (CONTROL HEAD ONLY)

Want to add a new unit to an existing Humminbird network, or select your own transducer? A CHO model gives you the freedom to choose. View our accessory transducer options, including a built-in MEGA Imaging trolling motor from Minn Kota. Find the right one for you on pages 46-47.



AIRMAR CHIRP TRANSDUCERS

The SOLIX Series is compatible with Airmar's CHIRP-ready transducers and includes Airmar xID for simple configuration and the best possible sonar picture. Trusted by commercial fishermen and tournament anglers everywhere, Airmar will help you find fish at depths that were previously unimaginable. Learn more at airmar.com.



- CROSS TOUCH INTERFACE
- MEGA SIDE IMAGING+
- MEGA DOWN IMAGING+
- DUAL SPECTRUM CHIRP
- PRECISION GPS
- HUMMINBIRD BASEMAP
- AUTOCHART LIVE
- ETHERNET NETWORKING
- WI-FI
- NMEA 2000
- Bluetooth

BUILT-IN TECHNOLOGIES VARY BY MODEL - SEE PAGE 33

ADD ONS

- MEGA LIVE IMAGING
- MEGA 360 IMAGING
- i-PILOT LINK
- CHIRP RADAR

Humminbird LakeMaster | Humminbird LakeMaster PLUS | Humminbird CoastMaster
 Humminbird SmartStrike | Humminbird AutoChart Live Zero Line | Navionics | Navionics+
 Navionics HotMaps Platinum | Navionics Platinum+ | Minn Kota Talon | Minn Kota Raptor | AIS | AutoPilot
 GPS Heading Sensor | 5-Port Ethernet Switch | CZONE Contact 6/Contact 6 Plus 6 Digital Switching



FISHSMART APP COMPATIBLE

Update software and access technical support using the FishSmart app. See details on page 59.

NEW HELIX SERIES

G4N

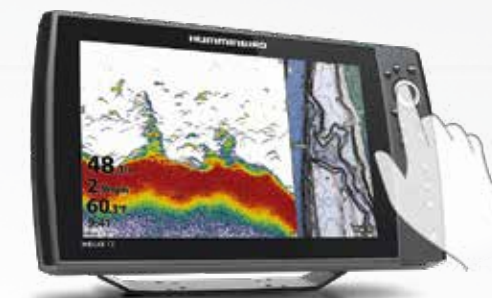
FISHING RUNS IN THE FAMILY.

Every moment on the water matters. Don't waste a second messing around with your fish finder. The HELIX Series puts you on fish faster with an easy-to-use interface. You'll have innovative technologies at your command with options including MEGA Imaging+,™ Dual Spectrum CHIRP, AutoChart Live, Ethernet, Bluetooth, Wi-Fi and NMEA 2000 connectivity. Pick your choice of screen size and choose from either the One-Boat Network-compatible HELIX G4N Series, or a standalone HELIX G3/G2 model. All are ready to fish right out of the box, because at Humminbird, simplicity is in our DNA.



QUICK AND INTUITIVE KEYPAD CONTROL

Master HELIX at the touch of a button. Access the preloaded views from the user-friendly menu system. Soft key controls allow you to reliably operate your fish finder in any condition.



INDUSTRY-LEADING SONAR AND BUILT-IN GPS

See more of what you want with innovative sonar technologies like Dual Spectrum CHIRP (2D) sonar and available MEGA Imaging+. Built-in GPS and Humminbird Basemap will show you the way, with premium chart options from LakeMaster, CoastMaster and Navionics.

NETWORKING COMPATIBLE

HELIX G4N Series comes standard with Ethernet networking and Bluetooth connectivity, allowing connection between other Humminbird fish finders and One-Boat Network products. Additionally, take advantage of built-in Wi-Fi and NMEA 2000 for data from other accessories on your boat.



HELIX SERIES

HD DISPLAY
1280x800
15" | 12" models
1024x600
10" | 9" | 8" models

CONNECTIVITY
Ethernet
Bluetooth
Wi-Fi
NMEA 2000
CHIRP Radar

SONAR
MEGA Imaging+
Dual Spectrum CHIRP
MEGA 360 Imaging*
MEGA Live Imaging*

GPS/CHARTS
Built-In GPS
Humminbird BaseMap
AutoChart Live
LakeMaster*
CoastMaster*
Navionics*



ONE-BOAT NETWORK™

*Compatible



HELIX SERIES

G4N + G3N NETWORKING



HELIX Series G4N/G3N is part of the One-Boat Network (See page 4).

HELIX SERIES | MEGA SI · MEGA DI · CHIRP · GPS

Get everything, plus the kitchen sink. These HELIX Series models are One-Boat Network compatible and fully stocked with Humminbird innovations, from incredible MEGA Side Imaging on down the line. Choose from a variety of screen sizes to match your fishing needs and boat.



- HELIX 15 MEGA SI+ GPS G4N**
HD 15.4" DISPLAY / 1280H X 800V
#411320-1 | #411320-1CHO (CONTROL HEAD ONLY)
- HELIX 12 MEGA SI+ GPS G4N**
HD 12.1" DISPLAY / 1280H X 800V
#411450-1 | #411450-1CHO (CONTROL HEAD ONLY)
- HELIX 10 MEGA SI+ GPS G4N**
HD 10.1" DISPLAY / 1024H X 600V
#411420-1 | #411420-1CHO (CONTROL HEAD ONLY)
- HELIX 9 MEGA SI+ GPS G4N**
HD 9" DISPLAY / 1024H X 600V
#411380-1 | #411380-1CHO (CONTROL HEAD ONLY)
- HELIX 8 MEGA SI+ GPS G4N**
HD 8" DISPLAY / 1024H X 600V
#411350-1 | #411350-1CHO (CONTROL HEAD ONLY)
- HELIX 7 MEGA SI GPS G3N**
HD 7" DISPLAY / 800H X 480V
#411080-1

HELIX SERIES | MEGA DI · CHIRP · GPS

Look out below. Starting with MEGA Down Imaging, these HELIX Series models offer a clearer view of what's underneath your boat, plus One-Boat Network compatibility and a strong mix of other sonar and mapping technologies. Select the screen size that best matches your needs.



- HELIX 15 MEGA DI+ GPS G4N**
HD 15.4" DISPLAY / 1280H X 800V
#411310-1CHO (CONTROL HEAD ONLY)
- HELIX 12 MEGA DI+ GPS G4N**
HD 12.1" DISPLAY / 1280H X 800V
#411440-1 | #411440-1CHO (CONTROL HEAD ONLY)
- HELIX 10 MEGA DI+ GPS G4N**
HD 10.1" DISPLAY / 1024H X 600V
#411410-1 | #411410-1CHO (CONTROL HEAD ONLY)
- HELIX 9 MEGA DI+ GPS G4N**
HD 9" DISPLAY / 1024H X 600V
#411370-1 | #411370-1CHO (CONTROL HEAD ONLY)
- HELIX 8 MEGA DI GPS G4N**
HD 8" DISPLAY / 1024H X 600V
#411340-1 | #411340-1CHO (CONTROL HEAD ONLY)
- HELIX 7 MEGA DI GPS G3N**
HD 7" DISPLAY / 800H X 480V
#411070-1 | #411070-1CHO (CONTROL HEAD ONLY)

HELIX SERIES | CHIRP · GPS

If it's a better view you're after, start here. Offering the impressive detail of Dual Spectrum CHIRP Sonar, these HELIX Series models capture a solid mix of features to help you catch more fish. One-Boat Network compatibility and lots of screen sizes give you plenty of options.



- HELIX 12 CHIRP GPS G4N**
HD 12.1" DISPLAY / 1280H X 800V
#411430-1
- HELIX 10 CHIRP GPS G4N**
HD 10.1" DISPLAY / 1024H X 600V
#411400-1
- HELIX 9 CHIRP GPS G4N**
HD 9" DISPLAY / 1024H X 600V
#411360-1
- HELIX 8 CHIRP GPS G4N**
HD 8" DISPLAY / 1024H X 600V
#411330-1
- HELIX 7 CHIRP GPS G3N**
HD 7" DISPLAY / 800H X 480V
#411060-1 | #411210-1 (ALL SEASON)



ADD ONS



Humminbird LakeMaster | Humminbird LakeMaster PLUS | Humminbird CoastMaster
Humminbird SmartStrike | Humminbird AutoChart Live Zero Line | Navionics
Navionics+ | Navionics HotMaps Platinum | Navionics Platinum+
SM3000 Blackbox CHIRP | Minn Kota Talon | Bluetooth Remote | AIS
NMEA 2000 | AutoPilot | GPS Heading Sensor | 5-Port Ethernet Switch



FISHSMART APP COMPATIBLE
Update software and access technical support using the FishSmart app. See details on page 59.

CHO MODELS (CONTROL HEAD ONLY)
Want to add a new unit to an existing Humminbird network, or select your own transducer? A CHO model gives you the freedom to choose. View our accessory transducer options, including a built-in MEGA Imaging trolling motor from Minn Kota. Find the right one for you on pages 46-47.



HELIX SERIES

G3 + G2 NON-NETWORKING

Sometimes, fishing is a sport best enjoyed solo. These standalone HELIX Series fish finders offer an impressive array of features, from MEGA Imaging to Dual Spectrum CHIRP sonar, to Humminbird LakeMaster compatibility. No matter the size of your crew or your boat, there's something here for everyone.

HELIX 7 SERIES G3 GPS MODELS



HELIX 7 MEGA SI GPS G3
7" DISPLAY / 800H X 480V
#410950-1

HELIX 7 MEGA DI GPS G3
7" DISPLAY / 800H X 480V
#410940-1

HELIX 7 CHIRP GPS G3
7" DISPLAY / 800H X 480V
#410930-1

HELIX 5 SERIES G2 GPS MODELS



HELIX 5 SI GPS G2
5" DISPLAY / 800H X 480V
#410230-1

HELIX 5 DI GPS G2
5" DISPLAY / 800H X 480V
#410220-1

HELIX 5 CHIRP GPS G2
5" DISPLAY / 800H X 480V
#410210-1
#410260-1 (PORTABLE)
#411190-1 (ALL SEASON)

HELIX 5 SERIES G2 NON-GPS MODELS



HELIX 5 DI G2
5" DISPLAY / 800H X 480V
#410200-1

HELIX 5 SONAR G2
5" DISPLAY / 800H X 480V
#410190-1
#410250-1 (PORTABLE)

PORTABLE MODELS

include a soft-sided carrying case with a suction cup transducer, 7Ah battery and charger.



HELIX ALL SEASON MODELS

Fishing never goes out of season with these versatile, all-in-one units, including everything needed for ice fishing and additional accessories for use on a boat.

- Transom mount transducer with temperature and optional suction cup mount
- Gimbal mounting bracket
- 6 ft (2 m) long power cable



ICE HELIX 7
CHIRP GPS G3N AS
#411210-1

ICE HELIX 5
CHIRP GPS G2 AS
#411190-1



PIRANHAMAX

NON-NETWORKING

Get bites even on a bite-sized budget with this pint-sized sonar powerhouse offering Down Imaging and 2D Sonar or 2D Sonar Only models, plus flexible mounting options. Hey, fish. Chew on that.



PIRANHAMAX 4 DI
4.3" DISPLAY / 272H X 480V
#410160-1

PIRANHAMAX 4
4.3" DISPLAY / 272H X 480V
#410150-1
#410170-1 (PORTABLE)

PORTABLE MODEL

includes a soft-sided carrying case with a suction cup transducer, 7Ah battery and charger.



BUILT-IN TECHNOLOGIES VARY BY MODEL - SEE PAGES 38-39

ADD ONS (GPS MODELS ONLY)

Humminbird LakeMaster | Humminbird LakeMaster PLUS | Humminbird CoastMaster | Humminbird SmartStrike
Humminbird AutoChart Live Zero Line | Navionics | Navionics+ | Navionics HotMaps Platinum | Navionics Platinum+

HELIX SERIES

15 / 12



HELIX 15 MEGA SI+ GPS
G4N NETWORKING | #411320-1



HELIX 15 MEGA DI+ GPS CHO
G4N NETWORKING | #411310-1



HELIX 12 MEGA SI+ GPS
G4N NETWORKING | #411450-1



HELIX 12 MEGA DI+ GPS
G4N NETWORKING | #411440-1



HELIX 12 CHIRP-GPS
G4N NETWORKING | #411430-1

Additional Model Options	HELIX 15 MEGA SI+ GPS G4N CHO (Control Head Only) #411320-1CHO	—
Interface	Keypad Control (X-Press Menu™ System)	Keypad Control (X-Press Menu System)
Display Size & Pixel Matrix	15.4" Diagonal 1280H x 800V	15.4" Diagonal 1280H x 800V
Bluetooth	Built-In	Built-In
Wi-Fi	Built-In	Built-In
Water Surface Temp	Built-In Transducer	Built-In Transducer
Speed	GPS Speed Included	GPS Speed Included
Waterproof Class	IPX7	IPX7
Mounting Options	Gimbal or Optional Rear In-Dash	Gimbal or Optional Rear In-Dash
Transducer Included	XM 9 HW MSI T (Transom Mount)	Control Head Only – Transducer Not Included
Power Input	10.8-20 VDC	10.8-20 VDC
Power Draw	4.1 Amps	4.1 Amps

Additional Model Options	HELIX 12 MEGA SI+ GPS G4N CHO (Control Head Only) #411450-1CHO	HELIX 12 MEGA DI+ GPS G4N CHO (Control Head Only) #411440-1CHO	—
Interface	Keypad Control (X-Press Menu System)	Keypad Control (X-Press Menu System)	Keypad Control (X-Press Menu System)
Display Size & Pixel Matrix	12.1" Diagonal 1280H x 800V	12.1" Diagonal 1280H x 800V	12.1" Diagonal 1280H x 800V
Bluetooth	Built-In	Built-In	Built-In
Wi-Fi	Built-In	Built-In	Built-In
Water Surface Temp	Built-In Transducer	Built-In Transducer	Built-In Transducer
Speed	GPS Speed Included	GPS Speed Included	GPS Speed Included
Waterproof Class	IPX7	IPX7	IPX7
Mounting Options	Gimbal or Optional Rear In-Dash	Gimbal or Optional Rear In-Dash	Gimbal or Optional Rear In-Dash
Transducer Included	XM 9 HW MSI T (Transom Mount)	XM 9 HW MDI T	XNT 9 HW T (Transom Mount)
Power Input	10.8-20 VDC	10.8-20 VDC	10.8-20 VDC
Power Draw	3.2 Amps	3.2 Amps	3.2 Amps

SONAR CAPABILITIES

Sonar Types - Standard	MEGA Side Imaging+ MEGA Down Imaging+ Dual Spectrum CHIRP	MEGA Down Imaging+ Dual Spectrum CHIRP
Sonar - Coverage	20°, 42°, 60°, (2) 86° & (2) 55° @ -10dB (Total of 180°)	25°, 42°, 45°, 75° @ -10dB
Sonar - Frequencies Supported	50/83/200/455/800 kHz & 1.2 MHz	50/83/200/455/800 kHz & 1.2 MHz
2D CHIRP - Frequencies Supported	Full Mode (150-200 kHz) Narrow Mode (140-200 kHz) Wide Mode (180-240 kHz)	Full Mode (150-200 kHz) Narrow Mode (140-200 kHz) Wide Mode (180-240 kHz)
CHIRP Imaging - Frequencies Supported	455 kHz SI (405-505 kHz) 455 kHz DI (435-535 kHz) 800 kHz SI (780-840 kHz) 800 kHz DI (800-860 kHz) MEGA SI+ (1050-1175 kHz) MEGA DI+ (1100-1200 kHz)	455 kHz DI (435-535 kHz) 800 kHz DI (800-860 kHz) MEGA DI+ (1100-1200 kHz)
Target Separation	2.5" (63.5 mm)	2.5" (63.5 mm)
Power Output (Max)	1000 Watts (RMS)*; 8000 Watts (Peak-to-Peak)*	1000 Watts (RMS)*; 8000 Watts (Peak-to-Peak)*
Depth - Sonar	1200 ft (Standard Transducer) 3500 ft (Optional Transducer)	1200 ft (Standard Transducer) 3500 ft (Optional Transducer)
Range - Side Imaging (Side-To-Side)	800 ft (244 m) – 455 kHz 250 ft (76 m) – 800 kHz 400 ft (122 m) – MEGA+	—
Depth - Down Imaging	400 ft (122 m) – 455 kHz 125 ft (38 m) – 800 kHz 200 ft (61 m) – MEGA+	400 ft (122 m) – 455 kHz 125 ft (38 m) – 800 kHz 200 ft (61 m) – MEGA+

Sonar Types - Standard	MEGA Side Imaging+ MEGA Down Imaging+ Dual Spectrum CHIRP	MEGA Down Imaging+ Dual Spectrum CHIRP	Dual Spectrum CHIRP
Sonar - Coverage	20°, 42°, 60°, (2) 86° & (2) 55° @ -10dB (Total of 180°)	25°, 42°, 45°, 75° @ -10dB	20°, 42° & 60° @ -10dB
Sonar - Frequencies Supported	50/83/200/455/800 kHz & 1.2 MHz	50/83/200/455/800 kHz & 1.2 MHz	50/80/200 kHz
2D CHIRP - Frequencies Supported	Full Mode (150-200 kHz) Narrow Mode (140-200 kHz) Wide Mode (180-240 kHz)	Full Mode (150-200 kHz) Narrow Mode (140-200 kHz) Wide Mode (180-240 kHz)	Full Mode (150-200 kHz) Narrow Mode (140-200 kHz) Wide Mode (180-240 kHz)
CHIRP Imaging - Frequencies Supported	455 kHz SI (405-505 kHz) 455 kHz DI (435-535 kHz) 800 kHz SI (780-840 kHz) 800 kHz DI (800-860 kHz) MEGA SI+ (1050-1175 kHz) MEGA DI+ (1100-1200 kHz)	455 kHz DI (435-535 kHz) 800 kHz DI (800-860 kHz) MEGA DI+ (1100-1200 kHz)	—
Target Separation	2.5" (63.5 mm)	2.5" (63.5 mm)	2.5" (63.5 mm)
Power Output (Max)	1000 Watts (RMS)*; 8000 Watts (Peak-to-Peak)*	1000 Watts (RMS)*; 8000 Watts (Peak-to-Peak)*	1000 Watts (RMS)*; 8000 Watts (Peak-to-Peak)*
Depth - Sonar	1200 ft (Standard Transducer) 3500 ft (Optional Transducer)	1200 ft (Standard Transducer) 3500 ft (Optional Transducer)	1200 ft (Standard Transducer) 3500 ft (Optional Transducer)
Range - Side Imaging (Side-To-Side)	800 ft (244 m) – 455 kHz 250 ft (76 m) – 800 kHz 400 ft (122 m) – MEGA+	—	—
Depth - Down Imaging	400 ft (122 m) – 455 kHz 125 ft (38 m) – 800 kHz 200 ft (61 m) – MEGA+	400 ft (122 m) – 455 kHz 125 ft (38 m) – 800 kHz 200 ft (61 m) – MEGA+	—

MAPPING AND GPS FEATURES (For available Humminbird map cards see pages 44-45)

GPS Receiver	Internal	Internal
Waypoints, Routes, Tracks/Points	2,500, 47, 50/20,000	2,500, 47, 50/20,000
Humminbird Basemap Built-In	●	●
Humminbird AutoChart Live (In Open Water Mode)	●	●
Humminbird AutoChart Live Ice (In Ice Fishing Mode)	—	—

GPS Receiver	Internal	Internal	Internal
Waypoints, Routes, Tracks/Points	2,500, 47, 50/20,000	2,500, 47, 50/20,000	2,500, 47, 50/20,000
Humminbird Basemap Built-In	●	●	●
Humminbird AutoChart Live (In Open Water Mode)	●	●	●
Humminbird AutoChart Live Ice (In Ice Fishing Mode)	—	—	—

ACCESSORY OPTIONS

MEGA Live Imaging	○	○
MEGA 360 Imaging	○	○
CHIRP Radar	○	○
HDMI In/Out	—	—
Minn Kota Built-In MEGA Imaging	○	○
Minn Kota i-Pilot Link	○	○
Minn Kota Talon with Bluetooth	○	○
Cannon Optimum Downrigger	○	○

MEGA Live Imaging	○	○	○
MEGA 360 Imaging	○	○	○
CHIRP Radar	○	○	○
HDMI In/Out	—	—	—
Minn Kota Built-In MEGA Imaging	○	○	○
Minn Kota i-Pilot Link	○	○	○
Minn Kota Talon with Bluetooth	○	○	○
Cannon Optimum Downrigger	○	○	○

NETWORK OPTIONS

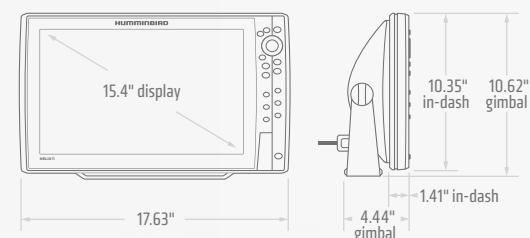
One-Boat Network Compatible	●	●
External GPS Receiver	○	○
AIS	○	○
VHF Radio	○	○
AutoPilot	○	○
5-Port Ethernet Switch	○	○
NMEA 2000	○	○

One-Boat Network Compatible	●	●	●
External GPS Receiver	○	○	○
AIS	○	○	○
VHF Radio	○	○	○
AutoPilot	○	○	○
5-Port Ethernet Switch	○	○	○
NMEA 2000	○	○	○

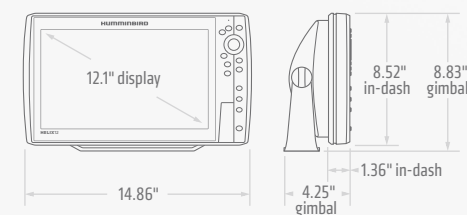
● Included ○ Optional — Not supported *Optional deepwater transducer required Features and specifications subject to change without notice.



HELIX 15



HELIX 12





ACCESSORIES

- 42 | Built-In Charts
- 44 | Premium Charts
- 46 | Transducer Hardware
- 48 | MEGA Live Imaging
MEGA 360 Imaging Transducers
- 49 | CHIRP Radar
NMEA 2000
- 50 | Depth Gauge
External GPS Modules
AutoPilot
- 51 | Ethernet Networking
Power Cables
Portable Battery Kit
- 52 | AutoChart PC Software
- 53 | Fish Finder Mounting Hardware
Fish Finder Covers/Cases
Apparel
- 54 | Humminbird FAQs
- 56 | Boat Rigging Guide
- 59 | FishSmart

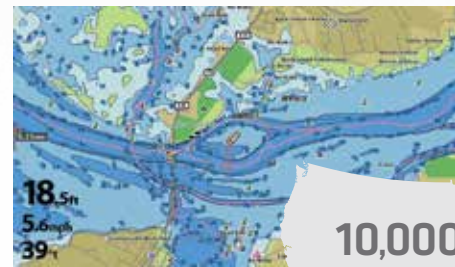
BUILT-IN

HUMMINBIRD

CHARTS

READY TO FISH, RIGHT OUT OF THE BOX.

Only Humminbird delivers the detail, accuracy and innovative, one-of-a-kind features to eliminate unproductive water and find the best fishing spots faster. These powerful built-in maps will make the most of any day on the water. Search less. Fish more.



10,000+
U.S. LAKES



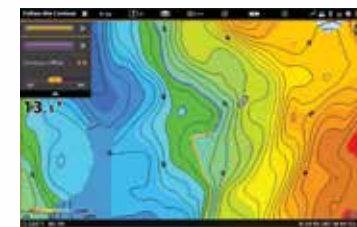
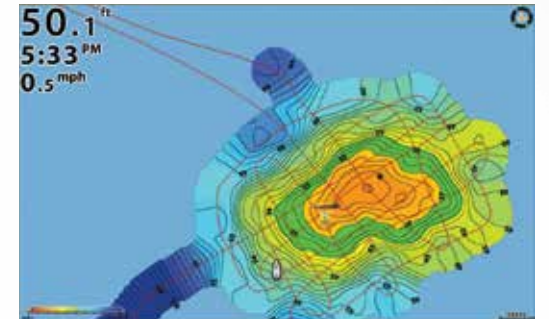
COMPLETE
U.S. COASTAL
COVERAGE

HUMMINBIRD BASEMAP

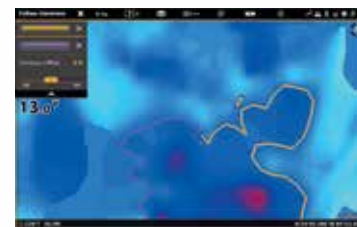
We've enhanced our standard Basemap to deliver more detail and a superior angling experience. The Humminbird Basemap is built into all APEX, SOLIX and GPS-equipped HELIX Series models. Based on freshwater data from LakeMaster and CoastMaster data from the most-trusted saltwater sources, these accurate maps provide you with a clear view of underwater terrain. Identify buoys, daymarkers, hazards, marinas and countless other navigation aids and points of interest with our comprehensive icon system. You'll also see contours, depth markings and, for coastal areas, spot soundings. On the water, confidence is key. And the Humminbird Basemap delivers.

AUTOCHART LIVE

Build richly detailed maps of your favorite fishing spots in real time with Humminbird AutoChart Live, available on all APEX, SOLIX and GPS-equipped HELIX Series models. Map the water as you drive the boat, with eight hours of built-in recording time. Once your map has been created, view it with vegetation, bottom hardness and depth contours to locate the best fish-holding areas. Also, use it with i-Pilot Link Follow and other patented Humminbird LakeMaster features. The future of digital charting has arrived. Better get on board.



DEPTH CONTOURS



BOTTOM HARDNESS



VEGETATION

AUTOCHART LIVESHARE

Get high detail, real-time updates and access to a global network. AutoChart LiveShare is a community-mapping resource allowing you to download the latest AutoChart Live mapping data from fellow anglers around the world and add it to your own map collection on your unit. You can also upload your own data if you choose. Visit Humminbird.com/AutoChartLiveShare to learn how to open a free account to get started today. Requires AutoChart Zero Line SD Card.

CONTRIBUTE MAPS

Record chart data using AutoChart Live on your Humminbird, and save it onto a Zero Line SD card. Then, upload maps to your AutoChart LiveShare account.



ACCESS MAPS FREE

Download map data from the global community onto a Zero Line SD card. Insert the card into your Humminbird and start using depth contour information.

AUTOCHART ZERO LINE SD CARD

For easy storage and sharing of your AutoChart and AutoChart Live data, opt for the AutoChart Zero Line SD Card. See page 52 for more details.



AUTOCHART
ZERO LINE
SD CARD
#600033-1

PREMIUM

HUMMINBIRD CHARTS

TREASURE HUNTING STARTS WITH A GOOD MAP.

No matter where the journey takes you, only Humminbird gives you access to the detail, accuracy, innovation and one-of-a-kind features of LakeMaster maps, providing you the information needed to eliminate unproductive water and find prized fishing spots faster. With Humminbird's premium cartography options, you'll make the most of every day on the water.



LAKEMASTER REGIONS

- DAKOTAS/NEBRASKA**
LAKEMASTER V6 | #600013-5
LAKEMASTER PLUS V2 | #600013-6
SMARTSTRIKE V2 | #600034-2
- GREAT LAKES**
LAKEMASTER V4 | #600015-7
LAKEMASTER PLUS V2 | #600015-6
SMARTSTRIKE V3 | #600035-3
- GREAT PLAINS**
LAKEMASTER V6 | #600017-5
LAKEMASTER PLUS V1 | #600017-4
SMARTSTRIKE V2 | #600036-2
- MANITOBA (Lake of Woods included)**
LAKEMASTER V1 | #600056-1
- MID-ATLANTIC STATES**
LAKEMASTER V1 | #600056-1
LAKEMASTER PLUS V2 | #600043-4
SMARTSTRIKE V2 | #600047-2
- MIDSOUTH STATES**
LAKEMASTER V5 | #600009-9
LAKEMASTER PLUS V3 | #600009-8
SMARTSTRIKE V4 | #600037-4
- MINNESOTA (Woods/Rainy included)**
LAKEMASTER V9 | #600021-9
LAKEMASTER PLUS V4 | #600021-10
SMARTSTRIKE V5 | #600038-5
- NORTHEAST STATES**
LAKEMASTER V2 | #600045-3
LAKEMASTER PLUS V2 | #600045-4
SMARTSTRIKE V2 | #600048-2
- ONTARIO (Woods/Rainy included)**
LAKEMASTER V2 | #600053-2
- QUEBEC**
LAKEMASTER V1 | #600055-1
- SOUTHEAST STATES**
LAKEMASTER V5 | #600023-8
LAKEMASTER PLUS V3 | #600023-7
SMARTSTRIKE V4 | #600039-4
- WESTERN STATES**
LAKEMASTER V3 | #600011-4
LAKEMASTER PLUS V2 | #600011-5
SMARTSTRIKE V3 | #600040-3
- WISCONSIN**
LAKEMASTER V8 | #600025-7
LAKEMASTER PLUS V3 | #600025-8
SMARTSTRIKE V4 | #600041-4

NEW

COASTMASTER



Find the path to your next big catch with the incredible accuracy and detail of Humminbird CoastMaster. With easy-to-read contours and chart customization, you'll be able to identify the spots you know will hold fish and navigate there safely. Building on the latest data available, CoastMaster delivers unrivaled nearshore and offshore angling performance. You'll also have access to more fish-catching features thanks to compatibility with the One-Boat Network from Humminbird and Minn Kota.



COASTMASTER U.S. COASTAL V1 #601015-1



VX TECHNOLOGY

Don't delay. Vector-accelerated technology provides five customizable color palettes and fast map load times, so you can seize every moment on the water.



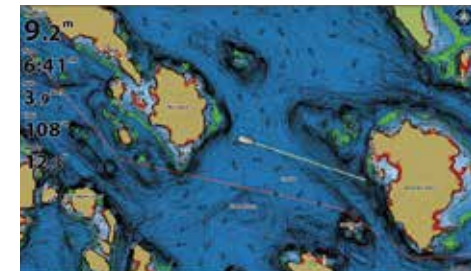
TIDES & CURRENTS

Whichever way the tide rolls, make sure it's in your favor. CoastMaster's predictive software allows you to plan your fishing day with tidal direction and height, as well as the speed and direction of currents and more, so you'll never be caught guessing.



CHART VIEWS

See the water your way with three view presets. Customize each desired preset and easily switch from Fishing, Navigation and User modes to show only the details you want and need on screen for your fishing preferences.

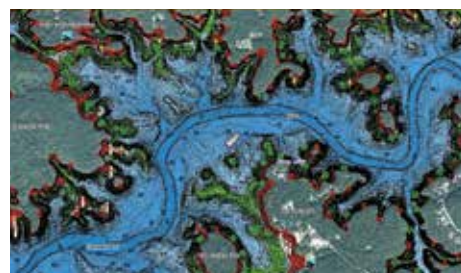


LAKEMASTER

From easy-to-read contours to highlighted depth ranges to scrollable lake lists, Humminbird LakeMaster mapping delivers the tools you need to make every moment count. And, with an ever-growing list of available regions and lakes, plus recent innovations like LakeMaster PLUS and ChartSelect®, fish are running out of places to hide. Learn more at Humminbird.com/LakeMaster.



LAKEMASTER MICRO SD CARD WITH SD ADAPTER



LAKEMASTER PLUS

For an added angling advantage, opt for Humminbird LakeMaster PLUS. This family of digital GPS maps gives you all the features of LakeMaster, with one key addition: aerial photography. View these high-detail images on your fish finder as a single layer, overlay it with LakeMaster contours, or overlay it with the full LakeMaster map for maximum detail. Now that's a major plus.



LAKEMASTER PLUS MICRO SD CARD WITH SD ADAPTER



SMARTSTRIKE

Humminbird SmartStrike™ takes you straight to the action. Access the high-definition contour information of LakeMaster, with the added fish-finding ability to search based on parameters like season, time of day, temperature and target fish species. SmartStrike highlights the areas of the map where fish are likely to be found. Compatible with all APEX, SOLIX and GPS-equipped HELIX G2/G2N or newer models.



SMARTSTRIKE MICRO SD CARD WITH SD ADAPTER

➤ TO FIND A LIST OF COVERAGE OF WATERS FOR ANY REGION, VISIT Humminbird.com/Support/Chart-Lists

TRANSDUCERS



- TRANSMOM**
Mount on the transom (back of the boat).
Available on many models, the impact release feature pivots transducer out of the way if struck by an object.
- TROLLING MOTOR**
Mount on most trolling motors.
Low-profile shape reduces drag and hang-ups on weeds.
- IN-HULL**
Mount to inside of most single-layer fiberglass hulls using slow-cure epoxy.
(Cored fiberglass, metal or wood hulls not acceptable. Hull must be free of trapped air and voids.)
- PORTABLE**
Mount on transom or side of most smooth-surface wood, aluminum or fiberglass boats.
Heavy-duty suction cup holds transducer at trolling speeds only.
- STAINLESS STEEL THRU-HULL**
Get MEGA Imaging+ (both Side Imaging and Down Imaging) as well as Dual Spectrum CHIRP 2D sonar from this heavy-duty thru-hull option.
- BRONZE**
Ideal for large boats and boats with in-board motors.
Not recommended for trailered boats. Professional installation recommended.
- PLASTIC**
Economic alternative to bronze transducer. Mounts on thinner hulls such as aluminum.
Not recommended for trailered boats. Professional installation recommended.
- ICE**
This Dual Beam transducer can be used as replacement or to convert any portable unit into an ice-ready fish finder.

1	XM 9 HW MSI T	XTM 9 HW MSI T	—	—	—	—	XPTH 9 HW MSI T	—
2	XM 9 HW MDI T	XTM 9 HW MDI T	—	—	—	—	XPTH 9 HW MSI T	—
3	XNT 9 HW MSI 150 T	XTM 9 HW MSI 150 T	—	—	—	—	—	—
4	XNT 9 HW MDI 75 T	XTM 9 HW MDI 75 T	—	—	—	—	—	—
5	XNT 9 HW T	XTM 9 HW T	XP 9 HW T XP 9 HW	XPT 9 HW T	—	—	XPTH 9 HW T	—
6	XM 9 20 MSI T	XTM 9 20 MSI T	—	—	—	—	XPTH 9 20 MSI T	—
7	XM 9 MDI T	XTM 9 MDI T	—	—	—	—	—	—
8	XNT 9 20 T XNT 9 20	XTM 9 20 T	XP 9 20 T XP 9 20 XAP 9 20	XPT 9 20 T	—	XTH 9 20	XTH 9 20 P	XI 9 20
9	XNT 9 SI 180 T	XTM 9 SI 180 T	—	—	—	—	XPTH 9 HDSI 180 T	—
10	XHS 9 HDSI 180 T	XTM 9 HDSI 180 T	—	—	—	—	XPTH 9 HDSI 180 T	—
11	XNT 9 DI T	XTM 9 WIDE DI 20 T	—	—	—	—	XPTH 9 DI T	—
12	XNT 9 DI T	XTM 9 DI 25 T	—	—	—	—	XPTH 9 DI T	—
13	—	—	—	—	—	—	—	XI 9 19
14	XNT 9 28 T	XTM 9 28 T	—	—	—	—	—	—
15	XNT 9 20 T XNT 9 20	XTM 9 20 T	XP 9 20 T XP 9 20 XAP 9 20	XPT 9 20 T	—	XTH 9 20	XTH 9 20 P	XI 9 1521
16	XNT 9 HW T	XTM 9 HW T	XP 9 HW T XP 9 HW	XPT 9 HW T	—	—	XPTH 9 HW T	—
17	XM 14 HW MSI T	XTM 14 HW MSI T	—	—	—	SSTH 14 HS MSI+ T	XPTH 14 HW MSI T	—
18	XM 14 HW MDI T	XTM 14 HW MDI T	—	—	—	SSTH 14 HS MSI+ T	—	—
19	XNT 14 HW T	XTM 14 HW T	XP 14 HW T XP 14 HW	—	—	—	XPTH 14 HW T	—
20	XM 14 20 MDI T	XTM 14 20 MDI T	—	—	—	—	—	—
21	XNT 14 20 T XNT 14 74 T	XTM 14 20 T	XP 14 20 XP 14 20 T	—	—	XTH 14 20	XPTH 14 20 T XPTH 14 74 T	—
22	XNT 14 DI T	XTM 14 DI T	—	—	—	—	XPTH 14 20 MSI T	—
23	XM 14 20 MSI T	—	—	—	—	—	XPTH 14 20 MSI T XPTH 14 74 MSI T	—

TRANSDUCER MOUNTING



- TRANSMOM MOUNT KIT**
Mounting hardware for transom-mount transducers. Kits include all mounting brackets, hardware and cable clamps required for installation.
- TROLLING MOTOR MOUNT KIT**
Mounting hardware kit adapts our standard transom-mount transducers for use on the trolling motor. Kits include all mounting brackets, hardware and wire ties required for installation.
- PORTABLE MOUNT KIT**
For use with portable transducers. Includes all hardware and suction cup.
- ICE MOUNT KIT**
Transducer mounting hardware and float for XI 9 19 and XI 9 20 ice transducers.
- KAYAK MOUNT KIT**
Transducer mounting hardware for installation in a kayak. Kit includes surface-preparation products in addition to a transducer cradle and adhesive products.

MHX XM HW	AD MTM HW MSI	—	—	—
MHX XM HW	AD MTM HW MDI	—	—	—
MHX XNT or MHX MXNT	AD XTM 9	—	—	—
MHX XNT or MHX MXNT	AD XTM 9	—	—	—
MHX XNT or MHX MXNT	AD XTM 9	MHX XNPT	—	—
MHX XM HW	AD MTM	—	—	—
MHX XNT or MHX MXNT	AD XTM 9	MHX XNPT	—	—
MHX XNT or MHX MXNT	AD XTM 9	—	—	—
MHX HS	AD STM 7	—	—	—
MHX XNT or MHX MXNT	AD XTM 9	MHX XNPT	—	MHX XMK DI
MHX XNT or MHX MXNT	AD XTM 9	MHX XNPT	—	MHX XMK DI
—	—	—	MHX ICE	—
MHX XNT or MHX MXNT	AD XTM 9	MHX XNPT	—	MHX XMK
MHX XNT or MHX MXNT	AD XTM 9	MHX XNPT	MHX ICE	—
MHX XM HW	AD MTM HW MSI	—	—	—
MHX XM HW	AD MTM HW MDI	—	—	—
MHX XNT or MHX MXNT	AD XTM 9	—	—	—
MHX XNT or MHX MXNT	AD XTM 9	MHX XNPT	—	MHX XMK DI
MHX XNT or MHX MXNT	AD XTM 9	MHX XNPT	—	MHX XMK
MHX XNT or MHX MXNT	AD XTM 9	MHX XNPT	—	MHX XMK DI
MHX XM HW	AD MTM	—	—	—

TRANSDUCER CABLES



- EXTENSION**
10 FT AND 30 FT
Add extra length to standard transducer cables. Available in two lengths, cable plugs into existing transducer and your fish finder.
- DUAL BEAM**
Continuously splits Side Imaging signal and Dual Beam signal. For use with a second transducer without a switch.
- SPLITTER**
LEFT/RIGHT
Splits Side Imaging source signal into left and right output for two Side Imaging transducers.

EC M10 EC M30	9 M SIDB Y	9 M SILR Y
EC M10 EC M30	—	—
EC M10 EC M30	9 M SIDB Y	9 M SILR Y
EC M10 EC M30	—	—
EC M10 EC M30	—	—
EC M10 EC M30	9 M SIDB Y	9 M SILR Y
EC M10 EC M30	—	—
EC M10 EC M30	—	—
EC M10 EC M30	—	—
EC M10 EC M30	—	—
EC M10 EC M30	—	—
EC M10 EC M30	—	—
EC M10 EC M30	—	—
EC M10 EC M30	—	—
EC M10 EC M30	—	—
EC M10 EC M30	—	—
EC M10 EC M30	—	—
EC M10 EC M30	—	—
EC M10 EC M30	—	—
EC M3 14W10 EC M3 14W30	14 M ID SIDB Y	14 M ID SILR Y
EC M3 14W10 EC M3 14W30	—	—
EC M3 14W10 EC M3 14W30	—	—
EC M3 14W10 EC M3 14W30	—	—
EC M3 14W10 EC M3 14W30	—	—
EC M3 14W10 EC M3 14W30	—	—
EC M3 14W10 EC M3 14W30	—	—
EC M3 14W10 EC M3 14W30	—	—
EC M3 14W10 EC M3 14W30	14 M ID SIDB Y	14 M ID SILR Y

MODEL GROUP NUMBER

1	HELIX 15 MSI-GPS G4N HELIX 12 MSI-GPS G4N, HELIX 12 MSI-GPS G3N HELIX 10 MSI-GPS G4N, HELIX 10 MSI-GPS G3N HELIX 9 MSI-GPS G4N, HELIX 9 MSI-GPS G3N HELIX 8 MSI-GPS G4N, HELIX 8 MSI-GPS G3N	7	HELIX 12 CHIRP-MEGA DI-GPS G2N HELIX 10 CHIRP-MEGA DI-GPS G2N HELIX 9 CHIRP-MEGA DI-GPS G2N	13	ICE 35, 45, 55
2	HELIX 15 MDI-GPS G4N HELIX 12 MDI-GPS G4N, HELIX 12 MDI-GPS G3N HELIX 10 MDI-GPS G4N, HELIX 10 MDI-GPS G3N HELIX 9 MDI-GPS G4N, HELIX 9 MDI-GPS G3N	8	HELIX 12 CHIRP-GPS G2N, HELIX 12 CHIRP-GPS HELIX 10 CHIRP-GPS G2N, HELIX 10 SONAR-GPS HELIX 9 CHIRP-GPS G2N, HELIX 9 SONAR-GPS HELIX 7 SONAR-GPS G2, HELIX 7 CHIRP-GPS G2, HELIX 7 CHIRP-GPS G2N, HELIX 7 SONAR, HELIX 7 SONAR-GPS HELIX 5 SONAR G2, HELIX 5 CHIRP-GPS G2, HELIX 5 SONAR, HELIX 5 SONAR-GPS	14	PiranhaMAX 4, PiranhaMAX 176i, 195c, 196ci, 197c
3	HELIX 7 MSI-GPS G3N, HELIX 7 MSI-GPS G3	9	HELIX 7 CHIRP-SI-GPS G2, HELIX 7 CHIRP-SI-GPS G2N, HELIX 7 SI-GPS HELIX 5 CHIRP-SI-GPS G2, HELIX 5 SI-GPS	15	ICE HELIX 7 CHIRP-GPS G2N ICE HELIX 7 CHIRP-GPS G2 ICE HELIX 5 CHIRP-GPS G2 ICE HELIX 5 CHIRP G2
4	HELIX 8 MDI-GPS G4N, HELIX 8 MDI-GPS G3N HELIX 7 MDI-GPS G3N, HELIX 7 MDI-GPS G3	10	HELIX 12 CHIRP-SI-GPS HELIX 10 SI-GPS HELIX 9 SI-GPS	16	ICE HELIX 7 CHIRP-GPS G3N ICE HELIX 7 CHIRP-GPS G3
5	HELIX 12 CHIRP-GPS G4N, HELIX 12 CHIRP-GPS G3N HELIX 10 CHIRP-GPS G4N, HELIX 10 CHIRP-GPS G3N HELIX 9 CHIRP-GPS G4N, HELIX 9 CHIRP-GPS G3N HELIX 8 CHIRP-GPS G4N, HELIX 8 CHIRP-GPS G3N HELIX 7 CHIRP-GPS G3N, HELIX 7 CHIRP-GPS G3	11	HELIX 12 CHIRP-DI-GPS G2N, HELIX 12 CHIRP-DI-GPS HELIX 10 CHIRP-DI-GPS G2N, HELIX 10 DI-GPS HELIX 9 CHIRP-DI-GPS G2N, HELIX 9 DI-GPS	17	APEX 19 MSI APEX 16 MSI APEX 13 MSI SOLIX 15 MSI G3, SOLIX 15 MSI G2, SOLIX 12 MSI G2 SOLIX 12 MSI G3, SOLIX 10 MSI G2, SOLIX 10 MSI G2
6	HELIX 12 CHIRP-MEGA SI-GPS G2N HELIX 10 CHIRP-MEGA SI-GPS G2N HELIX 9 CHIRP-MEGA SI-GPS G2N	12	HELIX 7 CHIRP-DI G2, HELIX 7 CHIRP-DI-GPS G2, HELIX 7 CHIRP-DI-GPS G2N, HELIX 7 DI-GPS, HELIX 7 DI HELIX 5 DI G2, HELIX 5 CHIRP-DI-GPS G2, HELIX 5 DI-GPS, HELIX 5 DI PiranhaMAX 4 DI	18	SOLIX 15 MDI G2 SOLIX 12 MDI G2 SOLIX 10 MDI G2
				19	NOTE: Transducers in this category provide 2D readings only.
				20	SOLIX 15 SOLIX 12 SOLIX 10
				21	NOTE: Transducers in this category provide 2D readings only.
				22	SOLIX 15 SOLIX 12 SOLIX 10 ONIX - Down Imaging
				23	NOTE: Transducers in this category provide 2D readings only.

MEGA IMAGING BUILT INTO MINN KOTA TROLLING MOTORS

See what your trolling motor sees. Humminbird MEGA Side Imaging and MEGA Down Imaging are now built into select Minn Kota trolling motors (see chart below for model information). Just connect one of these to a compatible APEX, SOLIX or HELIX for a crystal clear view with no cluttered wires or clamps, and a transducer that's fully protected. Please note: accessory adapter cable required to connect trolling motor to compatible HELIX unit. Learn more at MinnKotaMotors.com.



Built-In Transducer	Minn Kota Trolling Motors
Built-In MEGA Down Imaging	Ultrex, Ulterra, Terrova and Fortrex
Built-In MEGA Side Imaging	Ulterra and Ulterra

AIRMAR CHIRP TRANSDUCERS

Take advantage of the full capability of APEX, SOLIX and HELIX's CHIRP Digital Sonar with Airmar CHIRP transducers. Durable, precise and innovative, these industry-leading transducers are available through your dealer. For more information, talk to your dealer or visit AirmarTechnology.com.



NEW

MEGA LIVE IMAGING

Bring the must-watch detail and non-stop action of MEGA Live Imaging to a fish finder near you. MEGA Live is compatible with all APEX, SOLIX and select HELIX Series models. Upgrading is as simple as connecting the Ethernet cable to your head unit and attaching the three-position MEGA Live transducer to your trolling motor.

Compatible Models

- APEX (all models)
- SOLIX (all models)
- HELIX 8-15 G3N/G4N models with MEGA Imaging



#710304-1

MEGA 360 IMAGING

Upgrading to incredible 360-degree views is as simple as adding the MEGA 360 Imaging transducer to your Minn Kota trolling motor and connecting to your Humminbird fish finder with MEGA Imaging+. The Ultrex MEGA 360 Imaging transducer is designed to mount to the Minn Kota Ultrex for uninterrupted use, even when in Spot-Lock mode. The Fortrex MEGA 360 Imaging transducer is compatible with both Minn Kota Fortrex and Maxxum trolling motors. Additional models include Universal and No Mount options, meaning that no matter your boat, there is a MEGA 360 Imaging for you to find more fish.

Compatible Models

- APEX (all models)
- SOLIX (all models)
- HELIX 8-15 G3N/G4N models with MEGA Imaging+

Some rigging configurations will require additional accessories, please see page 56 for more details.



MEGA 360 - ULTREX

#411250-1

MEGA 360 - FORTREX

#411260-1

MEGA 360 - UNIVERSAL

#411390-1

MEGA 360 - NO MOUNT

#411580-1

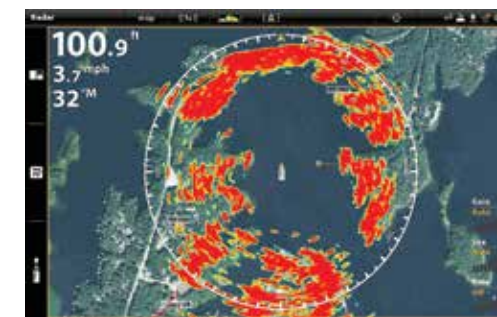
CHIRP RADAR

Introducing the next generation of marine radar: CHIRP Radar, featuring CHIRP Pulse Compression. Setting a new standard for compact solid state radar, this technology delivers superior target separation on both long and extremely short ranges. This translates to better situational awareness in low-visibility conditions, and helps identify birds and floating obstacles for clues to where game fish are located. You can also track weather and vessels with amazing definition. Available for select Humminbird models with Ethernet-networking capabilities.

HB 2124 CHIRP RADAR
#750013-1

Some compatible Humminbird models require additional adapter, listed below.

Models	Cables Required
APEX and SOLIX Series	Built-in
HELIX G2N/G3N/G4N Series	AS EC ODE (#720074-1)



Clearly identify this upcoming bridge with the precise imaging of Humminbird CHIRP Radar.

SOLID STATE PERFORMANCE

Thanks to solid state technology, Humminbird radar is safe, reliable and lightweight. At 12.3 lbs, the radar unit weighs 50% less than traditional magnetron radars and offers safe emissions with a low power radar transmitter. It's also ready to use in seconds, without a lengthy warm-up period.

CHIRP PULSE COMPRESSION

Along with excellent short-range detection (18 foot minimum range), CHIRP Pulse Compression ensures more energy reaches each target for superior imaging at long ranges up to 24 nautical miles. CHIRP Pulse Compression identifies small or weak targets, even while positioned close to strong returns.

SUPERIOR RADAR IMAGING

See things more clearly with Humminbird CHIRP Radar. Shorelines, buoys, other boats and weather—watch it all take shape on your display for maximum safety and a competitive edge. Available for all networking models, advanced target separation displays targets with unsurpassed resolution and quality.

SPECIFICATIONS

Antenna Dimension	21" Enclosed Dome
Antenna Type	Patch Array
Peak Power Output	20W
Transmit Frequency	9354 to 9446 MHz
Beamwidth (nominal)	4.9° Horizontal and 20° Vertical
Input Voltage	12 or 24 VDC (Min: 10.8V, Max: 31.2V)
Networking	Ethernet
Max. Range Scale	1/16" to 24 nautical miles
Power Consumption	Transmit Mode 17W; Standby Mode 7W
Duplexer	Circulator
Pulse Widths (3dB)	40 ns to 14.7 µs
CHIRP Lengths	400 ns to 20 µs
CHIRP Bandwidth	Up to 32 MHz
IF Bandwidth	26 MHz
Noise	Less than 4dB
Polarization	Horizontal
Weight	5.6 kg (12.3 lb)
Waterproofing	IPX6



NMEA 2000

Boat performance, weather or water conditions, make sense of it all with NMEA 2000 networking on your Humminbird fish finder. Display and easily interpret virtually any NMEA 2000 sensor with intuitive, high-color graphics and text. You can even view data for multiple engines and fuel tanks. Easily customize data boxes to suit your needs. Focus on a single reading or view multiple gauges at once for a more complete picture. Plug your NMEA 2000 network cable directly into all APEX, SOLIX and HELIX G4N models. For non-G4N HELIX Series models, a waterproof black-box solution (AS NMEA2K) is available.



HB N2K SINGLE STARTER KIT M
#700064-1

HB N2K DUAL STARTER KIT M (shown)
#700065-1



Drop Cables and Connectors

HB N2K Drop Cable 0.5M M	#720117-2
HB N2K Drop Cable 2M M	#720117-2 (shown)
HB N2K Drop Cable 5M M	#720117-3
HB N2K Drop Cable 10M M	#720117-4
HB N2K Power T M	#760037-1
HB N2K T-Connector M	#760038-1
HB N2K Terminator Female M	#700035-1
HB N2K Terminator Male M	#700036-1



Cables

AS OD NMEA 2000 (needed to adapt NMEA 2000 drop cable into quick-disconnect cable for HELIX G4N models)	#720114-1
AS NMEA (APEX adapter cable for NMEA 0183 accessory)	#720116-1 (shown)



HDR 650 DEPTH GAUGE

Humminbird Digital Depth Gauges give you instant, reliable depth readings even at speeds of up to 70 mph, and can alert you to both deep and shallow water. Installation in any existing 2 1/8" opening is easy, and they wire to the ignition to automatically turn on. We didn't stop there—the display reads in feet, meters or fathoms, and you can pick a color to complement your boat's gauges.

HDR 650
#407860-1



Customizable (two face plates and three trim rings included)

SONAR

Single Beam
200 kHz / 20° @ -10 dB
Depth: 600 ft

EXTERNAL GPS MODULES

Choose from two external GPS solutions. The AS GRP provides fast and precise position fixes accurate within 8.2 feet, even in lower signal areas. With an integrated heading sensor, the AS GPS HS lets you see compass information and your boat's orientation while moving or sitting still.

AS GPS HS #408400-1 AS GRP #408920-1



Some Humminbird models require additional accessories, see below.

Models	Accessories Required
APEX Series	AS GPS cable required to connect external GPS module
SOLIX Series	AS GPS NMEA cable required to connect external GPS module
HELIX 15, 12, 10, 9, 8 Series	N/A
HELIX 7 G2N and G3N Series	N/A

SERIAL PORT SPLITTER CABLES

Connect an external GPS receiver (AS GRP or AS GPS HS) to an APEX or SOLIX unit with pigtail for a NMEA 0183 communication feed if needed. Approximately 32".

Models	Splitter Cables
APEX Series	AS GPS
SOLIX Series	AS GPS NMEA



AS GPS NMEA #720080-1

AS GPS #720113-1

AUTOPILOT ACCESSORIES

Never deviate from your route with the precise control and proven performance of your Humminbird AutoPilot™ system. Easily navigate the SC 110 User Interface thanks to intuitive keys and menus, and a full-color, sunlight-readable display. This rugged pilot features advanced steering-control technology that holds its course even in high winds. Let it take the helm with total confidence, whatever the sea's conditions.



SC 110 #409100-1

SC 110 AUTOPILOT KIT (shown) #400052-1

SC 110 KIT W/O FB (rudder feedback not included) #400053-1



SCP 110 #408180-1

FXC 110 #408210-1

SCP CABLE 30 #720077-1

FB 30 #408150-1



HHRP 17-12 #408350-1

HHRP 11-12 (shown) #408340-1

ETHERNET NETWORKING

ETHERNET CABLES

Quickly set up an Ethernet connection between two Humminbird Ethernet-capable units. Available in five lengths—you select the length you need.

AS EC 5E (5 FT) #720073-6

AS EC 10E (10 FT) #720073-2

AS EC 15E (15 FT) #720073-5

AS EC 20E (20 FT) #720073-3

AS EC 30E (30 FT) #720073-4



ETHERNET ADAPTER CABLE

Allows Ethernet connection to HELIX 15/12/10/9/8/7, Ethernet-ready select 800/900/1100 Series and 700 HD Series units. Cable is 12-inches long.

AS EC QDE (12 IN) #720074-1



ETHERNET EXTENSION CABLE

Easily extend the reach of your Ethernet connection with this 30-foot cable.

AS ECX 30E (30 FT) #760025-1



DUAL HELIX STARTER KITS

Bring it all together with these quick and easy kits. Everything you need to network two Ethernet-equipped HELIX models on your fiberglass or aluminum boat is in each kit. Connect the included in-hull or transom mount Dual Spectrum CHIRP transducer to an existing Side/Down Imaging transducer using the enclosed splitter cable. Also included is an adapter cable to connect compatible HELIX 8, 9, 10, 12, 15 MEGA Imaging units to select Minn Kota motors with built-in MEGA Down Imaging.

DUAL HELIX STARTER KIT HWAL M1 - TRANSMOM (shown) #700062-1

DUAL HELIX STARTER KIT HWFG M1 - IN-HULL #700063-1



CONNECTION CHART

STEP 1

Find the group numbers for the two models you plan to network

GROUP 1	GROUP 2	GROUP 3	
APEX Series	HELIX 15 Series	1199ci HD	959ci HD
SOLIX Series	HELIX 12 Series	1159ci HD DI	899ci HD
	HELIX 10 Series	1159ci HD	859ci HD DI
	HELIX 9 Series	999ci HD	859ci HD
	HELIX 8 Series	959ci HD DI	
	HELIX 7 G2N and G3N Series		

STEP 2

Cross reference the group numbers to find the required cables to network your models

		SECOND MODEL TO NETWORK		
		1	2	3
FIRST MODEL TO NETWORK	1	Ethernet Cable	Ethernet Cable plus (1) AS EC QDE	Ethernet Cable plus (1) AS EC QDE
	2	Ethernet Cable plus (1) AS EC QDE	Ethernet Cable plus (2) AS EC QDE	Ethernet Cable plus (2) AS EC QDE
	3	Ethernet Cable plus (1) AS EC QDE	Ethernet Cable plus (2) AS EC QDE	Ethernet Cable plus (2) AS EC QDE

5-PORT ETHERNET SWITCH

Easily create a network using Ethernet-capable Humminbird fish finders. This waterproof, plug-and-play switch allows you to connect up to five Ethernet-based components. Some Sonar/GPS models require an additional adapter (see list to the right).



AS ETH 5PXG #408450-1

Models	Cables Required
APEX and SOLIX Series	AS EC 5/10/15/20/30E*
HELIX 15, 12, 10, 9, 8, Series	AS EC 5/10/15/20/30E plus AS EC QDE
HELIX 7 G2N/G3N Series	AS EC 5/10/15/20/30E plus AS EC QDE

* (1) Ethernet cable required to connect each networking fish finder (see Connection Chart above)

POWER CABLES

Cables come in standard six-foot lengths, but can be extended with 18awg multi-strand wire. Connect power to a fuse panel, or through inline fuse holder (not included) if hooked directly to the battery.

Models	Cables
APEX Series	PC 13
SOLIX Series	PC 12
HELIX 15, 12, 10, 9, 8, 7, 5 Series	PC 11 (Recommended for all Down Imaging and Side Imaging products) PC HELIX 12V DC (Not intended for permanent installation)
HELIX 7, 5 Series, Piranha and PiranhaMAX Series	PC 10 PC HELIX 12V DC (Not intended for permanent installation)
ICE 34,45,55	PC PT Portable
MEGA 360	PC MEGA 360

PC 13 #720110-1

PC MEGA 360 #720118-1

PC 12 OR #720085-1

PC 11 #720057-1

PC 10 #720002-1

PC HELIX 12V DC #720105-1



SEALED LEAD BATTERY KIT

12 volt, 9-amp hour AGM battery and wall charger for use with ICE HELIX, ICE flashers, portable models and portable conversion kits.

9 AH BK #770030-1

Models	Battery Kit
HELIX 5, 7 models ICE 35, 45, 55 models HELIX 5 portable models	9 AH BK



PC SOFTWARE

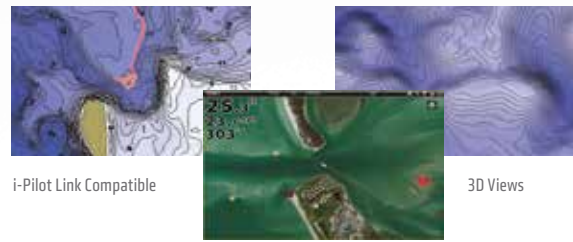
HUMMINBIRD AUTOCHART

Leave no waters uncharted. New AutoChart Zero Line SD cards give you access to the zero lines for ten million bodies of water—the starting point for creating accurate, detailed maps of any fishing spot. AutoChart's proprietary software uses your Humminbird's sonar returns and GPS to automatically build your charts. No subscriptions or hidden fees. No need to submit your data and wait weeks for a finished chart. AutoChart does it in just three simple steps—and your data is kept private, so your competition is none the wiser.

STEP 1 Record survey data with your Humminbird. 

STEP 2 Convert data on a PC with the AutoChart software. 

STEP 3 Export map to a Zero Line SD card for use in your Humminbird. 



i-Pilot Link Compatible

3D Views

Aerial Photography Overlay

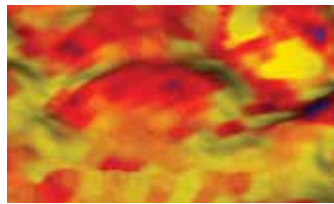
AUTOCHART #600031-1

AutoChart software includes Zero Line SD card and PC-compatible disc. Internet access required to activate software.



HUMMINBIRD AUTOCHART PRO

Add another layer of detail to your AutoChart mapping. AutoChart PRO offers all the leading features of AutoChart, but with two key enhancements designed to give tournament anglers a competitive edge. Bottom Hardness Indication delivers a crucial tip-off to where fish are hiding, while Side Imaging Mosaic allows you to overlay your Side Imaging returns onto your AutoChart map for a 3D visualization of fish-holding habitat. With AutoChart PRO, you'll have all the tools you need to bring your next trophy into sight.



Bottom Hardness Indication



Side Imaging Mosaic

AUTOCHART PRO #600032-1

AutoChart PRO software includes Zero Line SD card and PC-compatible disc. Internet access required to activate software.



AS EC CHART

Link your fishing system to your laptop. One end connects to your boat's Ethernet network, the opposite connects to your PC's Ethernet port. This is for use with AutoChart PC.



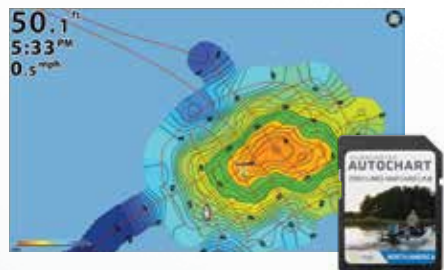
AS EC CHART #760032-1

Models

HELIX 15, 12, 10, 9, 8 Series
HELIX 7 G2N/G3N Series

AUTOCHART ZERO LINE SD CARD

For easy storage and sharing of your AutoChart and AutoChart Live data, opt for the AutoChart Zero Line SD Card. Store years of large, detailed maps on this 32GB card, with the flexibility to take your charts wherever you go. Use your maps on any Humminbird fish finder with AutoChart Live technology built in, or transfer them to your PC for file backup or optional sharing on AutoChart LiveShare.



AUTOCHART ZERO LINE SD CARD #600033-1

MOUNTING HARDWARE / COVERS / CASES



SERIES	UNIT MOUNTS	MOUNTING KNOBS	IN-DASH MOUNTING KITS	UNIT COVERS	CARRYING CASES	PORTABLE CASE CONVERSION KIT
APEX 19 Series	GM A19	—	IDMK RM A19 or IDMK FM APX	UC A19	—	—
APEX 16 Series	GM A16	—	IDMK RM A16 or IDMK FM APX	UC A16	—	—
APEX 13 Series	GM A13	—	IDMK RM A13 or IDMK FM APX	UC A13	—	—
SOLIX 15 Series	GM S15	MKH S	IDMK S15R	UC S15	—	—
SOLIX 12 Series	GM S12	MKH S	IDMK S12R	UC S12	—	—
SOLIX 10 Series	GM S10	MKH S	IDMK S10R	UC S10	—	—
HELIX 15 Series	GM H15	—	IDMK H15	UC H15	—	—
HELIX 12 Series	GM H12	MKH HL	IDMK H12R	UC H12	—	—
HELIX 10 Series G1 Series	GM H910	MKH HL	IDMK H910R	UC H910	—	—
HELIX 10 G2N/G3N/G4N Series	GM H910	MKH HL	IDMK H910R	UC H910	—	ICE PTC CHIRP H8910
HELIX 9 G1/G2N Series	GM H910	MKH HL	IDMK H910R	UC H910	—	ICE PTC CHIRP H8910 (G2N only)
HELIX 9 G3N/G4N Series	GM H910	MKH HL	IDMK H89R	UC H89	—	ICE PTC CHIRP H8910
HELIX 8 Series	GM H910	MKH HL	IDMK H89R	UC H89	—	ICE PTC CHIRP H8910
HELIX 7 G1 Series	GM H7	MKH HS	IDMK H7R	UC H7 or UC H7PR	—	ICE PTC XI 9 20 H57, PTC U2 or PTC UNB2
HELIX 7 G2/G3/G2N/G3N Series	GM H7	MKH HS	IDMK H7R	UC H7 or UC H7PR	—	ICE PTC CHIRP H57 FB, PTC U2 or PTC UNB2
HELIX 5 G1 Series	GM H5	MKH HS	IDMK H5	UC H5	—	ICE PTC XI 9 20 H57, PTC U2 or PTC UNB2
HELIX 5 G2 Series	GM H5	MKH HS	IDMK H5	UC H5	—	ICE PTC CHIRP H57 FB, PTC U2 or PTC UNB2
ICE 35, 45, 55	—	MKH 2	—	—	CC ICE	—
ICE HELIX 5 G2	GM H5	—	IDMK H5	UC H5	—	ICE PTC CHIRP H57 FB, PTC U2 or PTC UNB2
ICE HELIX 7 G2/G3	GM H7	—	IDMK H7R	UC H7 or UC H7PR	—	ICE PTC CHIRP H57 FB, PTC U2 or PTC UNB2
PiranhaMAX 4, PiranhaMAX 4 DI	MS PM2 + MS P2	540220-1	IDMK PM4	UC PM4	—	—

LET THE BIRD SOAR.

When it's time to thread the needle, you'll find the perfect threads here. From men's to women's, T-shirts to hoodies, and cotton to polyester, we've got you covered with fishing apparel that will help you stay cool and comfortable under pressure. Find your fit, then hit the water in style:



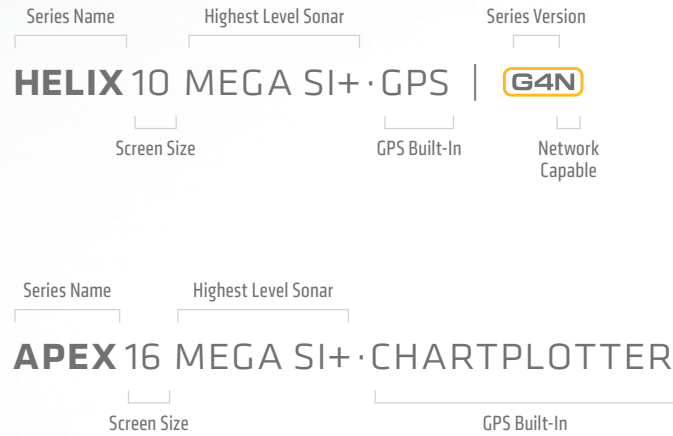
SHOP HUMMINBIRDAPPAREL.COM



FREQUENTLY ASKED QUESTIONS

How do I tell what technologies are included with my Humminbird unit?

The product name is your first clue to what technologies your Humminbird offers. Use the key below for help interpreting:



NETWORKING

All APEX, SOLIX and HELIX G4N/G3N models support networking features.

SONAR

The level of sonar listed in the model name indicates the highest level of sonar included, and all additional levels of sonar before it are also included.

MEGA SI models include:
MEGA Side Imaging, MEGA Down Imaging and Dual Spectrum CHIRP (2D sonar)

MEGA DI models include:
MEGA Down Imaging and Dual Spectrum CHIRP (2D sonar)

CHIRP models include:
Dual Spectrum CHIRP (2D sonar)

Why and how should I upgrade my Humminbird software?

In order to keep your fish finder running at peak performance and bring you newly available features, Humminbird offers free software updates. Current Humminbird units have updates available a few times a year. We highly encourage you to take advantage of this great opportunity to get new features on your Humminbird unit. These updates are free of charge and can be accessed at [Humminbird.com/Support/Software-Updates](https://www.humminbird.com/Support/Software-Updates) or on the free Humminbird FishSmart app and transferred to your Humminbird fish finder via Bluetooth.

What is the FishSmart app and why should I install it on my mobile device?

The free Humminbird FishSmart app is an iOS and Android™ app that allows you to make the most of your time on the water. The app's newest feature allows you to request a callback from a Humminbird rep for immediate questions and help with your Humminbird unit. Another time-saving feature allows you to download the latest software updates and send them directly to your Humminbird fish finder with Bluetooth. Additionally, this app allows you to purchase, download and view Humminbird's library of LakeMaster high-definition maps right from your smartphone or tablet, with the option to share them to a Bluetooth-equipped Humminbird fish finder. See page 59 for more info on the FishSmart app.



If my current Humminbird fish finder does not have (MEGA) Side Imaging or (MEGA) Down Imaging, can I buy a new transducer to upgrade my sonar?

New sonar technologies can only be provided by specific combinations of hardware, software and transducers. Because of this, changing only the transducer will not provide the hardware or software necessary for the fish finder to provide an upgraded sonar technology.

What do I need to get depth readings at high speed on my Humminbird Side Imaging-equipped HELIX, SOLIX or APEX model?

We suggest the combination of the supplied Side Imaging transducer and an accessory high-speed 2D transducer, both connected to a Side Imaging / 2D Y-cable that connects into your Humminbird unit. (See **INSTALLATION 6** diagram on page 58).

ETHERNET NETWORKING

What does "Ethernet Networking" mean and which Humminbird models have it?

Ethernet networking refers to the ability of a networking-capable Humminbird fish finder, such as HELIX G4N, HELIX G3N, SOLIX or APEX model, to share information like waypoints, tracks and transducer information, as well as connect to Ethernet accessories like Minn Kota trolling motors with i-Pilot Link or Humminbird CHIRP radar. Current networking capable models include HELIX 7 G3N, HELIX 8, 9, 10, 12 and 15 G4N, all SOLIX and all APEX models.

Why should I create an Ethernet network on my boat?

Ethernet networking will allow a Humminbird fish finder to share data with other networking-capable Humminbird fish finders, Minn Kota i-Pilot Link trolling motors and information from certain Humminbird accessories. Creating an Ethernet network will share information between Humminbird fish finders, Minn Kota trolling motors and Ethernet accessories, unlocking exclusive features and will create a more efficient, convenient and enjoyable fishing experience.

What's the best way to create a network allowing for the most functionality?

When networking Humminbird fish finders, it is recommended to network fish finders of the same series type (HELIX to HELIX or SOLIX to SOLIX), as these network configurations provide the greatest amount of functionality and benefits to an angler or captain.

What data is shared between networking-capable Humminbird units?

ALL ONE SERIES	MULTIPLE SERIES
For networks with all HELIX fish finders or a network with all SOLIX or APEX models.	When networks contain a mix of HELIX and SOLIX/APEX models, you will be able to share a limited selection of data from HELIX to SOLIX/APEX.
Waypoints	Waypoints
Transducer information*	—
MEGA 360 Imaging views	—
GPS Signal	—
Minn Kota i-Pilot Link info and control	Minn Kota i-Pilot Link info and control
Minn Kota Talon/Raptor control	—
Humminbird CHIRP radar	Humminbird CHIRP radar
NMEA 2000 network information	NMEA 2000 network information
Map card information (SOLIX/APEX networks only)	—

* Some sonar sharing depends on software compatibility and models networked

What do I need in order to network compatible Humminbird models?

For networking (1) Humminbird unit to another Humminbird unit, you will need the following:

UNITS	ETHERNET CABLE REQUIRED	ETHERNET ADAPTER REQUIRED
HELIX to HELIX	(1) Ethernet cable of appropriate length to span the distance between fish finders. These are available in lengths from 5 to 30 feet to match any rigging need.	(2) AS EC QDE (#720074-1) Ethernet adapter will be needed for connecting the Ethernet cable to the HELIX fish finder.
HELIX to SOLIX/APEX	Ethernet cable of appropriate length to span the distance between fish finders. These are available in lengths from 5 to 30 feet to match any rigging need.	(1) AS EC QDE (#720074-1) Ethernet adapter will be needed for connecting the Ethernet cable to the HELIX fish finder. The Ethernet cable will connect directly into the SOLIX unit.
SOLIX/APEX to SOLIX/APEX	Ethernet cable of appropriate length to span the distance between fish finders. This cable will connect directly into both SOLIX units and requires no adapter.	—

For networking 3 or more Humminbird fish finders or 2+ fish finders and i-Pilot Link, MEGA Live Imaging or other Ethernet accessories:

UNITS	ETHERNET SWITCH REQUIRED	ETHERNET CABLE REQUIRED	ETHERNET ADAPTER REQUIRED
HELIX	(1) AS ETH 5 PGX, 5-port Ethernet switch	(1 ea) Ethernet cable of appropriate length for each fish finder on the network, reaching from the Ethernet switch to the fish finder.	(1 ea) AS EC QDE (#720074-1) for every HELIX unit connected to the network.
SOLIX	(1) AS ETH 5 PGX, 5-port Ethernet switch	(1 ea) Ethernet cable of appropriate length for each fish finder on the network, reaching from the Ethernet switch to the fish finder.	—
APEX	—	(1 ea) Ethernet cable of appropriate length for each APEX on the network.	—

Additionally, we offer prepackaged kits that include everything you need to network two HELIX networking-capable fish finders:

DUAL HELIX STARTER KIT HWFG MI #700063-1	DUAL HELIX STARTER KIT HWAL MI #700062-1
Includes everything you need to network (2) HELIX fish finders on your fiberglass boat. Also includes high-speed transducer, Y-cable and HELIX adapter for built-in MEGA Imaging on Minn Kota trolling motors.	Includes everything you need to network (2) HELIX fish finders on your aluminum boat. Also includes high-speed transducer, Y-cable and HELIX adapter for built-in MEGA Imaging on Minn Kota trolling motors.

BOAT RIGGING GUIDE

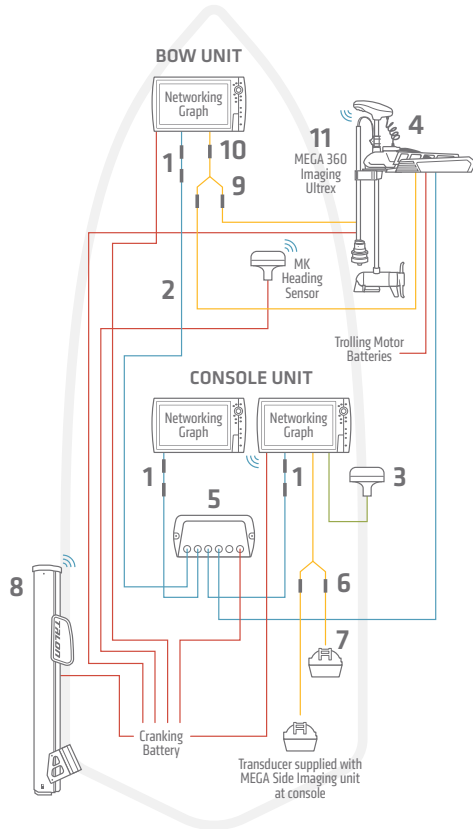
Here are some examples for configuring your One-Boat Network. For more, visit [Humminbird.com/Support/Installation-Diagrams](https://www.humminbird.com/Support/Installation-Diagrams).

■ NMEA 0183
 ■ Ethernet
 ■ 12V DC Power
 ■ Transducer Cable
 ■ Bluetooth® Signal

FRESHWATER INSTALLATION 1

Minn Kota Trolling motor with i-Pilot Link and built-in MEGA Imaging,
 (1) Bow-Mounted Humminbird unit, MEGA 360 Imaging – Ultrex,
 and Minn Kota Shallow Water Anchor.

HELIX SERIES	APEX/SOLIX SERIES
1 Ethernet Adapter Cable (Need 3) AS EC QDE #720074-1	Ethernet Adapter Cable N/A
2 Ethernet Cable (Need 3) AS EC SE (5') #720073-6 AS EC 10E (10') #720073-2 AS EC 15E (15') #720073-5 AS EC 20E (20') #720073-3 AS EC 30E (30') #720073-4	Ethernet Cable (Need 3) AS EC SE (5') #720073-6 AS EC 10E (10') #720073-2 aAS EC 15E (15') #720073-5 AS EC 20E (20') #720073-3 AS EC 30E (30') #720073-4
3 GPS + Heading Sensor AS GPS HS #408400-1	GPS + Heading Sensor APEX: AS GPS HS #408400-1 AS GPS #720113-1 SOLIX: AS GPS HS #408400-1 AS GPS NMEA #720080-1
4 Minn Kota Ultrex Trolling Motor with i-Pilot Link and built-in MEGA Imaging*	Minn Kota Ultrex Trolling Motor with i-Pilot Link and built-in MEGA Imaging*
5 5-Port Ethernet Switch AS ETH 5PXG #408450-1	5-Port Ethernet Switch AS ETH 5PXG #408450-1 (SOLIX only), N/A (APEX)
6 Transducer Splitter Cable 9 M SIDB Y #720101-1	Transducer Splitter Cable 14 M ID SIDB Y #720111-1
7 High Speed Transducer (fiberglass hull) XP 9 HW T #710276-1 High Speed Transducer (aluminum hull) XNT 9 HW T #710274-1	High Speed Transducer (fiberglass hull) XP 14 HW T #710287-1 High Speed Transducer (aluminum hull) XNT 14 HW T #710285-1
8 Minn Kota Talon/Raptor with Bluetooth Talon SWA	Minn Kota Talon/Raptor with Bluetooth Talon SWA
9 MEGA 360 and MDI/2D Y-Cable 14 M360 2DDI Y #720108-1	MEGA 360 and MDI/2D Y-Cable 14 M360 2DDI Y #720108-1
10 Adapter Cable for MEGA 360 Y-Cable AD HELIX M360 (included with MEGA 360)	Adapter Cable for MEGA 360 Y-Cable N/A
11 MEGA 360 Imaging MEGA 360 Imaging – Ultrex #411250-1	MEGA 360 Imaging MEGA 360 Imaging – Ultrex #411250-1



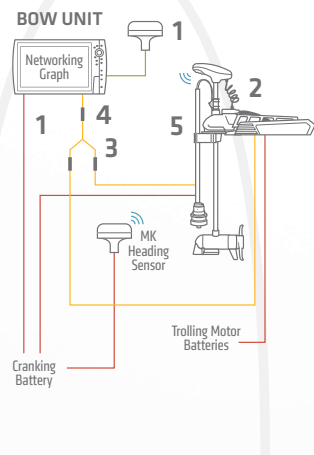
*One (1) AS ECX 30E ethernet extension cable included with i-Pilot Link trolling motor.

The accessories and part numbers listed above are valid as of December 2020. Installations shown are for HELIX G3N/G4N and APEX/SOLIX G2/G3 networking models and Minn Kota trolling motors with i-Pilot Link.

FRESHWATER INSTALLATION 3

Adding a MEGA 360 Imaging – Ultrex model to a boat with
 (1) Bow-Mounted Humminbird unit and Minn Kota motor with built-in MEGA Imaging.

HELIX SERIES	APEX/SOLIX SERIES
1 GPS + Heading Sensor AS GPS HS #408400-1	GPS + Heading Sensor APEX: AS GPS HS #408400-1 AS GPS #720113-1 SOLIX: AS GPS HS #408400-1 AS GPS NMEA #720080-1
2 Minn Kota Trolling Motor with i-Pilot Link and built-in MEGA Imaging*	Minn Kota Trolling Motor with i-Pilot Link and built-in MEGA Imaging*
3 MEGA 360 and MDI/2D Y-Cable 14 M360 2DDI Y #720108-1	MEGA 360 and MDI/2D Y-Cable 14 M360 2DDI Y #720108-1
4 MEGA 360 Adapter Cable AD HELIX M360 (included with MEGA 360)	MEGA 360 Adapter Cable N/A
5 MEGA 360 Imaging MEGA 360 Imaging – Ultrex #411250-1	MEGA 360 Imaging MEGA 360 Imaging – Ultrex #411250-1



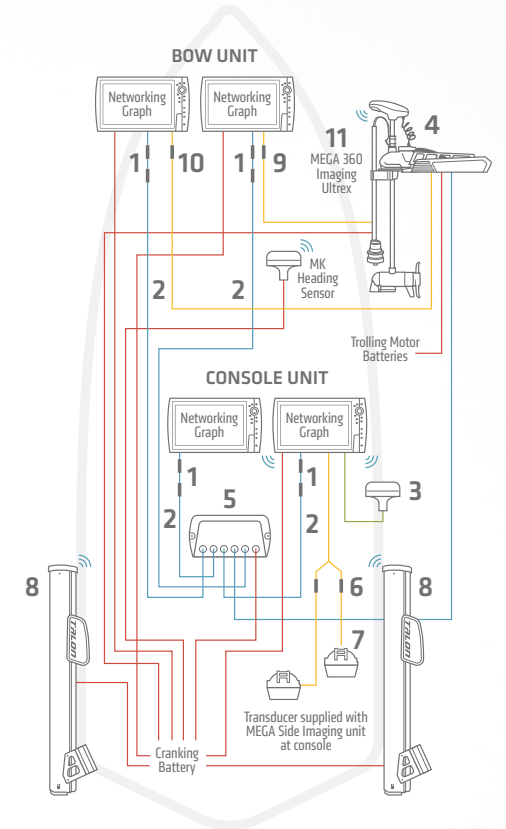
*One (1) AS ECX 30E ethernet extension cable included with i-Pilot Link trolling motor.

The accessories and part numbers listed above are valid as of December 2020. Installations shown are for HELIX G3N/G4N and APEX/SOLIX G2/G3 networking models and Minn Kota trolling motors with i-Pilot Link.

FRESHWATER INSTALLATION 2

Minn Kota Ultrex Trolling Motor with i-Pilot Link and built-in MEGA Imaging,
 (2) Bow-Mounted Humminbird units, MEGA 360 Imaging – Ultrex,
 (2) Console-Mounted Humminbird units, and Minn Kota Shallow Water Anchor.

HELIX SERIES	APEX/SOLIX SERIES
1 Ethernet Adapter Cable (Need 4) AS EC QDE #720074-1	Ethernet Adapter Cable N/A
2 Ethernet Cable (Need 4) AS EC SE (5') #720073-6 AS EC 10E (10') #720073-2 AS EC 15E (15') #720073-5 AS EC 20E (20') #720073-3 AS EC 30E (30') #720073-4	Ethernet Cable (Need 4) AS EC SE (5') #720073-6 AS EC 10E (10') #720073-2 aAS EC 15E (15') #720073-5 AS EC 20E (20') #720073-3 AS EC 30E (30') #720073-4
3 GPS + Heading Sensor AS GPS HS #408400-1	GPS + Heading Sensor APEX: AS GPS HS #408400-1 AS GPS #720113-1 SOLIX: AS GPS HS #408400-1 AS GPS NMEA #720080-1
4 Minn Kota Ultrex Trolling Motor with i-Pilot Link and built-in MEGA Imaging*	Minn Kota Ultrex Trolling Motor with i-Pilot Link and built-in MEGA Imaging*
5 5-Port Ethernet Switch AS ETH 5PXG #408450-1	5-Port Ethernet Switch AS ETH 5PXG #408450-1 (SOLIX only), N/A (APEX)
6 Transducer Splitter Cable 9 M SIDB Y #720101-1	Transducer Splitter Cable 14 M ID SIDB Y #720111-1
7 High Speed Transducer (fiberglass hull) XP 9 HW T #710276-1 High Speed Transducer (aluminum hull) XNT 9 HW T #710274-1	High Speed Transducer (fiberglass hull) XP 14 HW T #710287-1 High Speed Transducer (aluminum hull) XNT 14 HW T #710285-1
8 Minn Kota Talon/Raptor with Bluetooth (Need 2) Talon SWA	Minn Kota Talon/Raptor with Bluetooth (Need 2) Talon SWA
9 MEGA 360 Adapter Cable AD HELIX M360 (included with MEGA 360)	MEGA 360 Adapter Cable N/A
10 Adapter Cable for built-in MEGA Imaging MKR-MI-1 (HELIX 8-12 G2N and newer) #1852088 MKR-MDI-2 (HELIX 7 G3/G3N) #1852086	Adapter Cable for built-in MEGA Imaging N/A
11 MEGA 360 Imaging MEGA 360 Imaging – Ultrex #411250-1	MEGA 360 Imaging MEGA 360 Imaging – Ultrex #411250-1



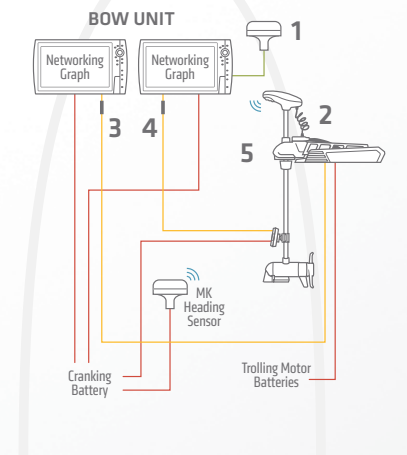
*One (1) AS ECX 30E ethernet extension cable included with i-Pilot Link trolling motor.

The accessories and part numbers listed above are valid as of December 2020. Installations shown are for HELIX G3N/G4N and APEX/SOLIX G2/G3 networking models and Minn Kota trolling motors with i-Pilot Link.

FRESHWATER INSTALLATION 4

Adding a MEGA Live Imaging transducer to a boat with
 (2) Bow-Mounted Humminbird networking units and a Minn Kota motor with built-in MEGA Imaging.

HELIX SERIES	APEX/SOLIX SERIES
1 GPS + Heading Sensor AS GPS HS #408400-1	GPS + Heading Sensor APEX: AS GPS HS #408400-1 AS GPS #720113-1 SOLIX: AS GPS HS #408400-1 AS GPS NMEA #720080-1
2 Minn Kota Trolling Motor with i-Pilot Link and built-in MEGA Imaging*	Minn Kota Trolling Motor with i-Pilot Link and built-in MEGA Imaging*
3 Adapter Cable for built-in MEGA Imaging MKR-MI-1 (HELIX 8-15 G2N and newer) #1852088 MKR-MDI-2 (HELIX 7 G3/G3N) #1852086	Adapter Cable for built-in MEGA Imaging N/A
4 Ethernet Adapter Cable AS EC QDE #720074-1	Ethernet Adapter Cable N/A
5 MEGA Live Imaging MEGA Live Imaging Transducer #710304-1	MEGA Live Imaging MEGA Live Imaging Transducer #710304-1



*One (1) AS ECX 30E ethernet extension cable included with i-Pilot Link trolling motor.

The accessories and part numbers listed above are valid as of December 2020. Installations shown are for HELIX G3N/G4N and APEX/SOLIX G2/G3 networking models and Minn Kota trolling motors with i-Pilot Link.

■ NMEA 0183 ■ Ethernet ■ 12V DC Power ■ Transducer Cable ■ Bluetooth® Signal

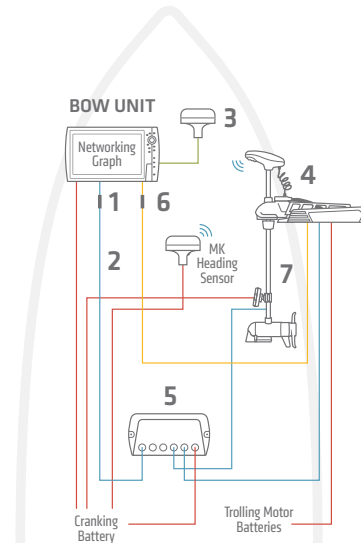
FRESHWATER INSTALLATION 5

Adding a MEGA Live Imaging transducer to a boat with (1) Bow-Mounted Humminbird networking unit and a Minn Kota motor with built-in MEGA Imaging.

HELIX SERIES	APEX/SOLIX SERIES
1 Ethernet Adapter Cable AS EC QDE #720074-1	Ethernet Adapter Cable N/A
2 Ethernet Cable (Need 1) AS EC SE (5') #720073-6 AS EC 10E (10') #720073-2 AS EC 15E (15') #720073-5 AS EC 20E (20') #720073-3 AS EC 30E (30') #720073-4	Ethernet Cable (Need 1) AS EC SE (5') #720073-6 AS EC 10E (10') #720073-2 AS EC 15E (15') #720073-5 AS EC 20E (20') #720073-3 AS EC 30E (30') #720073-4
3 GPS + Heading Sensor AS GPS HS #408400-1	GPS + Heading Sensor AS GPS HS #408400-1 AS GPS NMEA #720080-1
4 Minn Kota Trolling Motor with i-Pilot Link and built-in MEGA Imaging*	Minn Kota Trolling Motor with i-Pilot Link and built-in MEGA Imaging*
5 5-Port Ethernet Switch AS ETH SPXG #408450-1	5-Port Ethernet Switch AS ETH SPXG #408450-1 (SOLIX only), N/A (APEX)
6 Adapter Cable for built-in MEGA Imaging MKR-MI-1 (HELIX 8-15 G2N and newer) #1852088	Adapter Cable for built-in MEGA Imaging N/A
7 MEGA Live Imaging MEGA Live Imaging Transducer #710304-1	MEGA Live Imaging MEGA Live Imaging Transducer #710304-1

*One (1) AS ECX 30E ethernet extension cable included with i-Pilot Link trolling motor.

The accessories and part numbers listed above are valid as of December 2020. Installations shown are for HELIX G3N/G4N and APEX/SOLIX G2/G3 networking models and Minn Kota trolling motors with i-Pilot Link.

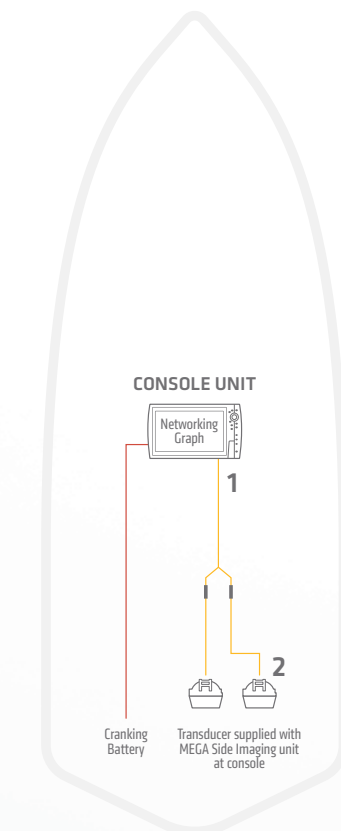


FRESHWATER INSTALLATION 6

(1) Humminbird console unit with Side Imaging and 2D sonar transducers with Y-cable for high-speed depth performance.

HELIX SERIES	APEX/SOLIX SERIES
1 Transducer Splitter Cable 9 M SIDB Y #720101-1	Transducer Splitter Cable 14 M ID SIDB Y #720111-1
2 High Speed Transducer (fiberglass hull) XP 9 HW T #710276-1	High Speed Transducer (fiberglass hull) XP 14 HW T #710287-1
High Speed Transducer (aluminum hull) XNT 9 HW T #710274-1	High Speed Transducer (aluminum hull) XNT 14 HW T #710285-1

The accessories and part numbers listed above are valid as of December 2020. Installations shown are for HELIX G3N/G4N and APEX/SOLIX G2/G3 networking models and Minn Kota trolling motors with i-Pilot Link.



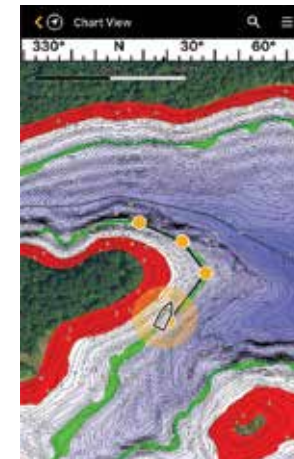
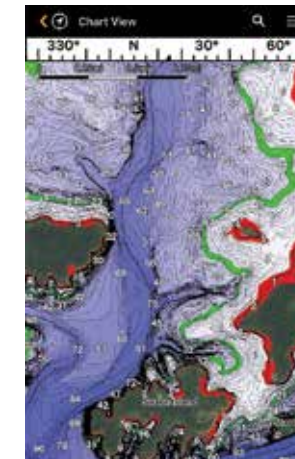
HUMMINBIRD

FISHSMART APP



TAKE THE LAKE HOME WITH YOU.

When you're not fishing, you're thinking about fishing. And the Humminbird FishSmart app is the best way to turn those thoughts into action. This free iOS and Android app allows you to purchase, download and view 2,200+ LakeMaster HD maps on your smartphone or tablet. It displays your real-time location via GPS, so you can mark waypoints, routes and tracks. And, to save you even more time on the water, FishSmart also helps keep your Bluetooth-enabled Humminbird up to date, even connecting you with Technical Support.



EASILY PURCHASE MAPS

Using the FishSmart app, purchase any one of the more than 2,200 HD LakeMaster maps directly from your Apple or Android device. From highlight depth, to shallow water highlight, to water level offset, you'll have everything you need to make the most of your time on the water. You can even overlay your maps with satellite images.

DATA AND GPS NAVIGATION

Get a head start on fishing trips with waypoints and routes. Even save your on-water tracks for future trips or for sharing with your friends via text or email. You can even transfer them to your Humminbird control head. Once on the water, know your exact location, speed and course on the water with GPS-enabled navigation available in FishSmart.

SOFTWARE UPDATES

Keep your Humminbird fish finder operating in peak form. The FishSmart app allows you to download and push software updates directly to your Humminbird control head or accessories.

REQUEST A CALLBACK

Need help with your Humminbird at home, at the dock or even on the water? You can request a Technical Support callback through the FishSmart app. This time-saving feature takes a snapshot of your product settings and shares it with our Technical Support team to help get you back to fishing faster.



BETTER TOGETHER

Sync your smartphone and Humminbird unit via Bluetooth to save time on the water. You'll be able to transfer maps and even update your unit's software wirelessly. If you need help, you can request a callback from Humminbird using FishSmart, automatically providing our Technical Support team the system info they need to get you back to fishing more quickly.



App Store is a service mark of Apple® Inc., registered in the U.S. and other countries. Google Play and the Google Play logo are trademarks of Google Inc.